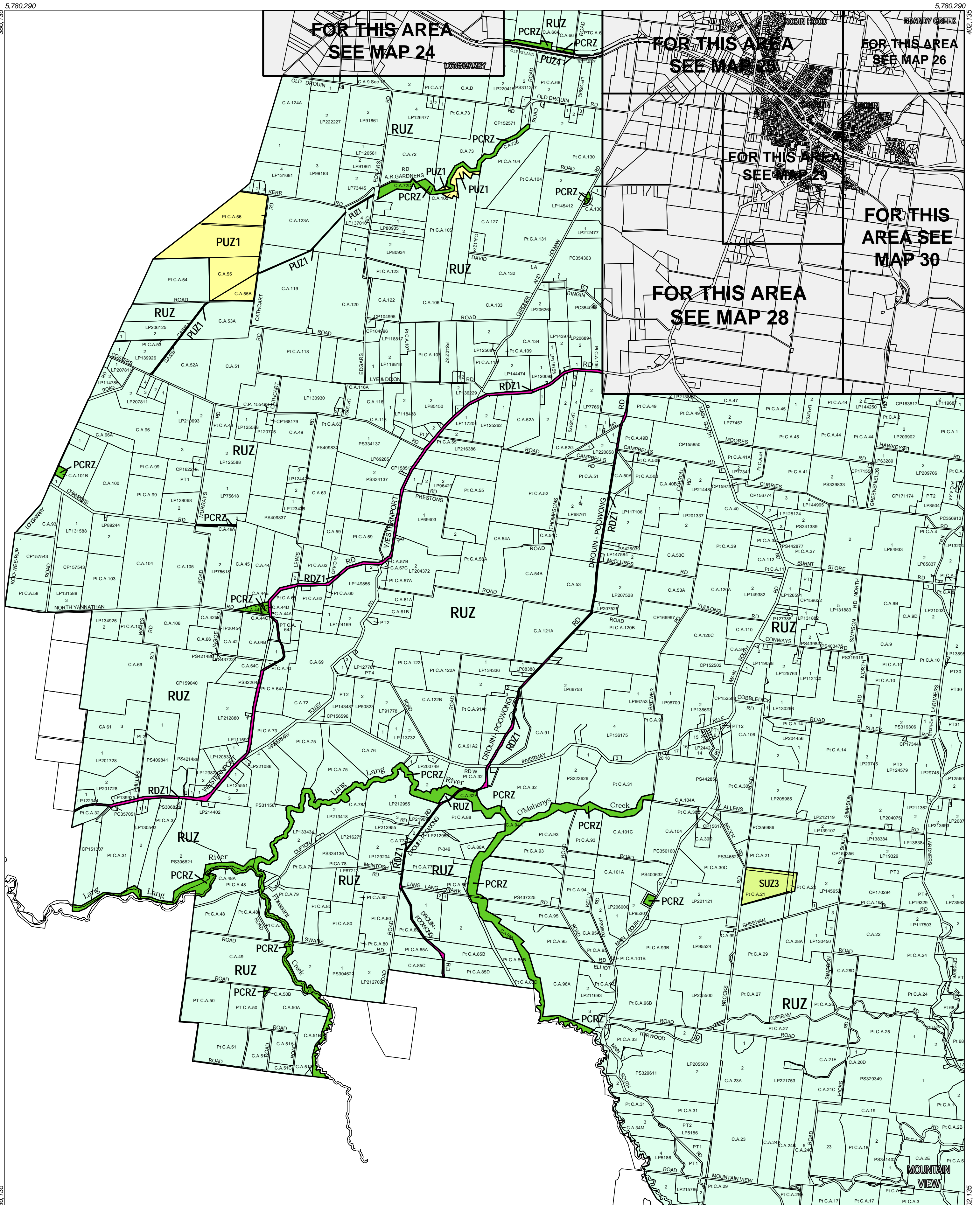


BAW BAW PLANNING SCHEME - LOCAL PROVISION



5,780,290
3,896,135
5,760,290

5,780,290
4,021,135
5,760,290

FOR THIS AREA SEE MAP 24

FOR THIS AREA SEE MAP 25

FOR THIS AREA SEE MAP 26

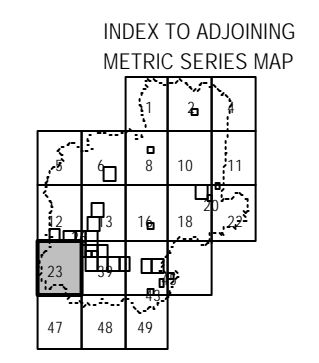
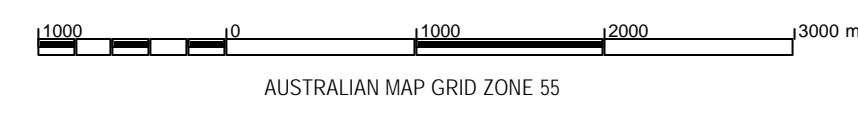
FOR THIS AREA SEE MAP 28

FOR THIS AREA SEE MAP 30

This publication is copyright. No part may be reproduced by any process except in accordance with the provisions of the Copyright Act 1968, State of Victoria.

This map should be read in conjunction with additional Planning Overlay Maps (if applicable) as indicated on the INDEX TO MAPS.

Industrial I1Z1 Industrial 1 Zone	Rural R1Z1 Rural Living Zone
Public Land P1Z1 Public Conservation And Resource Zone	Rural R2Z1 Rural Zone
Public Use Zone Service And Utility PUZ1 Public Use Zone Service And Utility	Special Purpose SUZ3 Special Use Zone 3
Public Use Zone Transport PUZ2 Public Use Zone Transport	
Residential R1Z2 Low Density Residential Zone	
Residential R1Z1 Residential 1 Zone	
Road Zone Category 1 RDZ1 Road Zone Category 1	



Amendment C17
Printed: 20/6/2003

