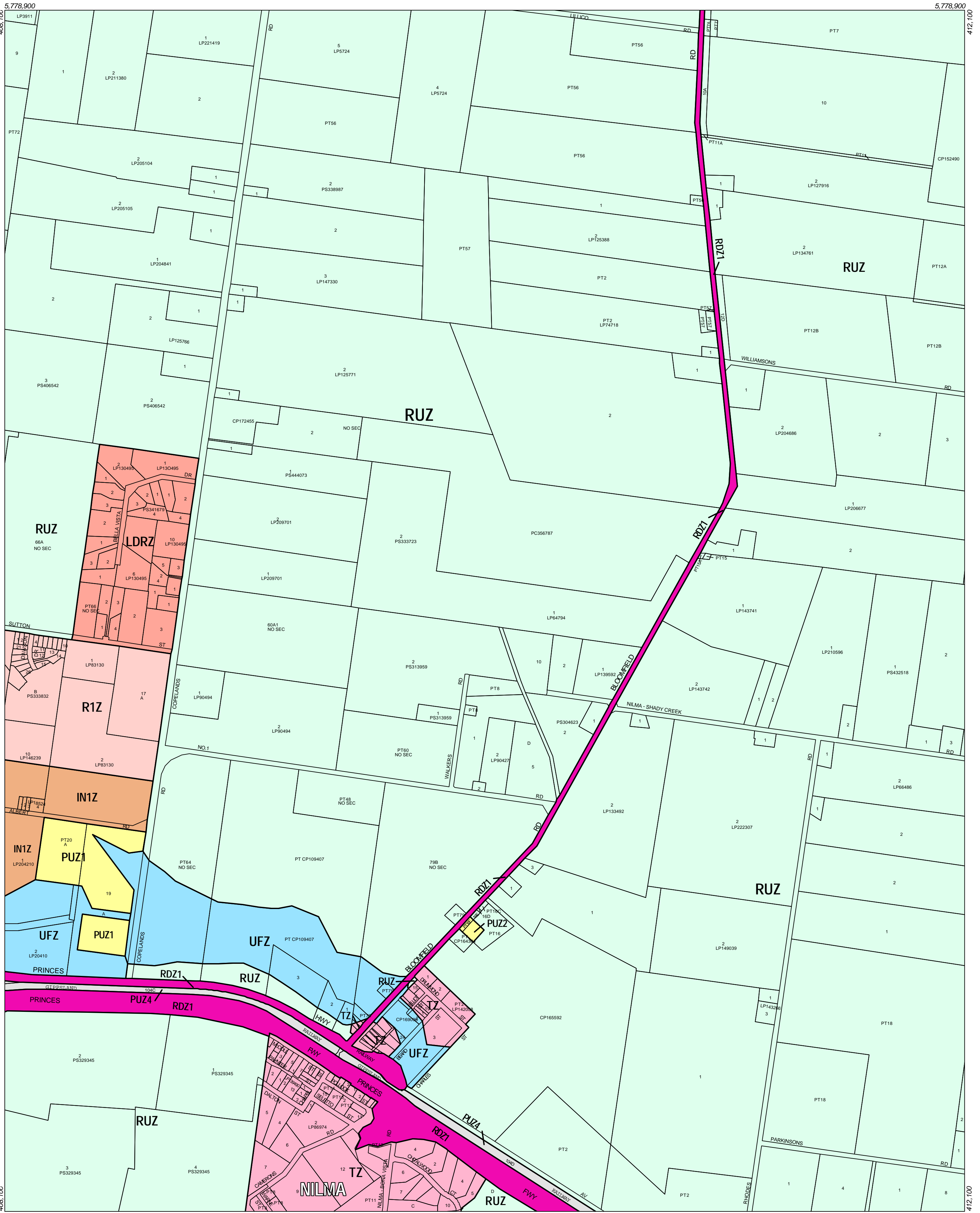


BAW BAW PLANNING SCHEME - LOCAL PROVISION



This publication is copyright. No part may be reproduced by any process except in accordance with the provisions of the Copyright Act 1968, State of Victoria.

This map should be read in conjunction with additional Planning Overlay Maps (if applicable) as indicated on the INDEX TO MAPS.

Industrial	Public Land	Residential	Special Purpose	Township Zone
IN1Z Industrial 1 Zone	PUZ1 Public Use Zone Education	RUZ Low Density Residential Zone	UFZ Urban Floodway Zone	TZ Township Zone
IN2Z Industrial 2 Zone	PUZ2 Public Use Zone Service And Utility	R1Z Residential 1 Zone		
IN3Z Industrial 3 Zone	PUZ4 Public Use Zone Transport			
IN4Z Industrial 4 Zone	RDZ1 Road Zone Category 1			
IN5Z Industrial 5 Zone				
IN6Z Industrial 6 Zone				
IN7Z Industrial 7 Zone				
IN8Z Industrial 8 Zone				
IN9Z Industrial 9 Zone				
IN10Z Industrial 10 Zone				
IN11Z Industrial 11 Zone				
IN12Z Industrial 12 Zone				
IN13Z Industrial 13 Zone				
IN14Z Industrial 14 Zone				
IN15Z Industrial 15 Zone				
IN16Z Industrial 16 Zone				
IN17Z Industrial 17 Zone				
IN18Z Industrial 18 Zone				
IN19Z Industrial 19 Zone				
IN20Z Industrial 20 Zone				
IN21Z Industrial 21 Zone				
IN22Z Industrial 22 Zone				
IN23Z Industrial 23 Zone				
IN24Z Industrial 24 Zone				
IN25Z Industrial 25 Zone				
IN26Z Industrial 26 Zone				
IN27Z Industrial 27 Zone				
IN28Z Industrial 28 Zone				
IN29Z Industrial 29 Zone				
IN30Z Industrial 30 Zone				
IN31Z Industrial 31 Zone				
IN32Z Industrial 32 Zone				
IN33Z Industrial 33 Zone				
IN34Z Industrial 34 Zone				
IN35Z Industrial 35 Zone				
IN36Z Industrial 36 Zone				
IN37Z Industrial 37 Zone				
IN38Z Industrial 38 Zone				
IN39Z Industrial 39 Zone				
IN40Z Industrial 40 Zone				
IN41Z Industrial 41 Zone				
IN42Z Industrial 42 Zone				
IN43Z Industrial 43 Zone				
IN44Z Industrial 44 Zone				
IN45Z Industrial 45 Zone				
IN46Z Industrial 46 Zone				
IN47Z Industrial 47 Zone				
IN48Z Industrial 48 Zone				
IN49Z Industrial 49 Zone				
IN50Z Industrial 50 Zone				
IN51Z Industrial 51 Zone				
IN52Z Industrial 52 Zone				
IN53Z Industrial 53 Zone				
IN54Z Industrial 54 Zone				
IN55Z Industrial 55 Zone				
IN56Z Industrial 56 Zone				
IN57Z Industrial 57 Zone				
IN58Z Industrial 58 Zone				
IN59Z Industrial 59 Zone				
IN60Z Industrial 60 Zone				
IN61Z Industrial 61 Zone				
IN62Z Industrial 62 Zone				
IN63Z Industrial 63 Zone				
IN64Z Industrial 64 Zone				
IN65Z Industrial 65 Zone				
IN66Z Industrial 66 Zone				
IN67Z Industrial 67 Zone				
IN68Z Industrial 68 Zone				
IN69Z Industrial 69 Zone				
IN70Z Industrial 70 Zone				
IN71Z Industrial 71 Zone				
IN72Z Industrial 72 Zone				
IN73Z Industrial 73 Zone				
IN74Z Industrial 74 Zone				
IN75Z Industrial 75 Zone				
IN76Z Industrial 76 Zone				
IN77Z Industrial 77 Zone				
IN78Z Industrial 78 Zone				
IN79Z Industrial 79 Zone				
IN80Z Industrial 80 Zone				
IN81Z Industrial 81 Zone				
IN82Z Industrial 82 Zone				
IN83Z Industrial 83 Zone				
IN84Z Industrial 84 Zone				
IN85Z Industrial 85 Zone				
IN86Z Industrial 86 Zone				
IN87Z Industrial 87 Zone				
IN88Z Industrial 88 Zone				
IN89Z Industrial 89 Zone				
IN90Z Industrial 90 Zone				
IN91Z Industrial 91 Zone				
IN92Z Industrial 92 Zone				
IN93Z Industrial 93 Zone				
IN94Z Industrial 94 Zone				
IN95Z Industrial 95 Zone				
IN96Z Industrial 96 Zone				
IN97Z Industrial 97 Zone				
IN98Z Industrial 98 Zone				
IN99Z Industrial 99 Zone				
IN100Z Industrial 100 Zone				

200 400 600 800 1000 m

AUSTRALIAN MAP GRID ZONE 55

Amendment C15
Printed: 20/6/2003

INDEX TO ADJOINING METRIC SERIES MAP