

**73.04**  
21/09/2018  
VC150

## NESTING DIAGRAMS

The information in the table to Clause 73.03 is set out in the following diagrams as a means of indicating the nesting of land use terms.

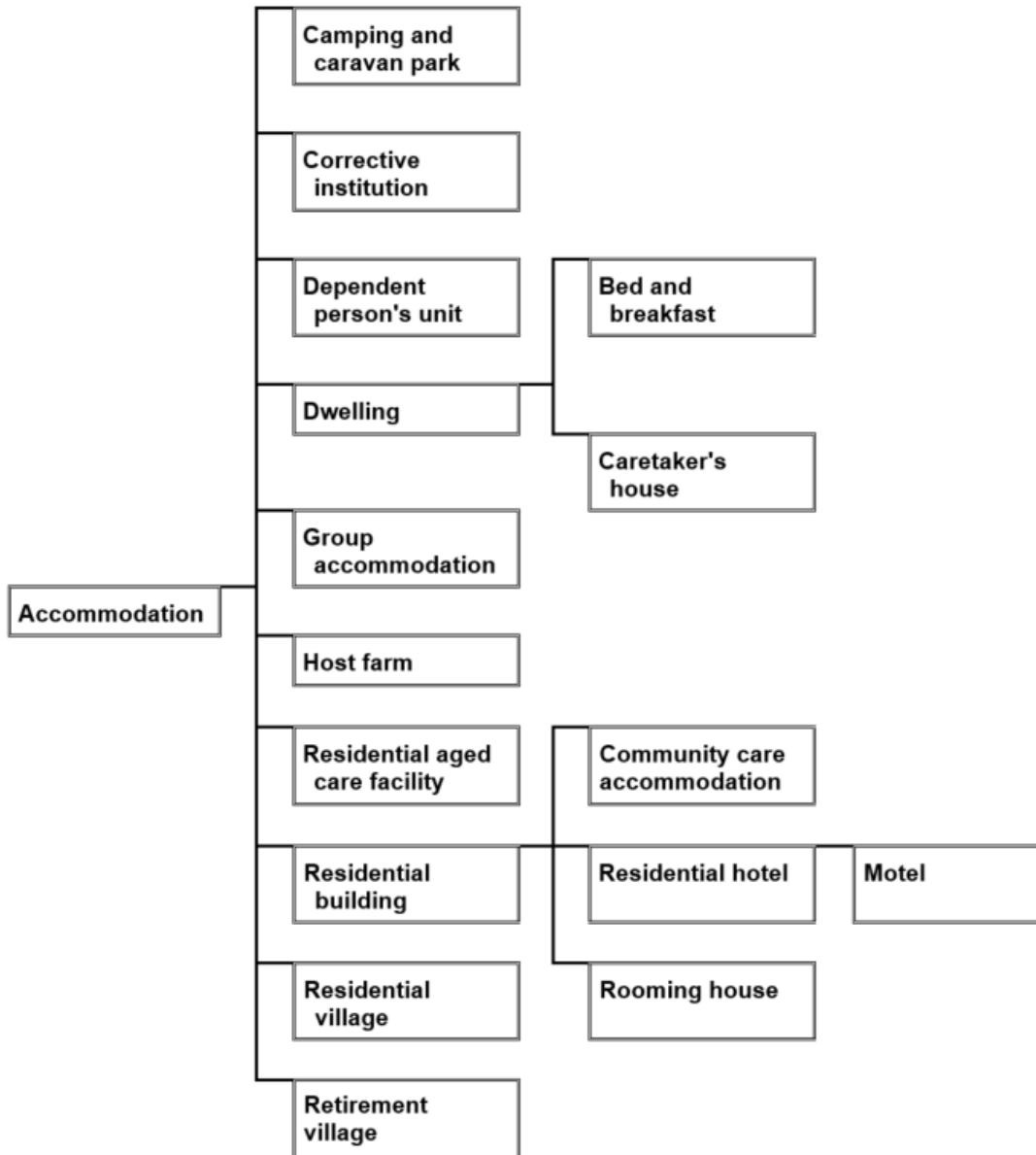
The table to Clause 73.03 prevails if there is any inconsistency between the table and the diagrams or list.

Land use terms that are not nested are listed at Clause 73.04-18.

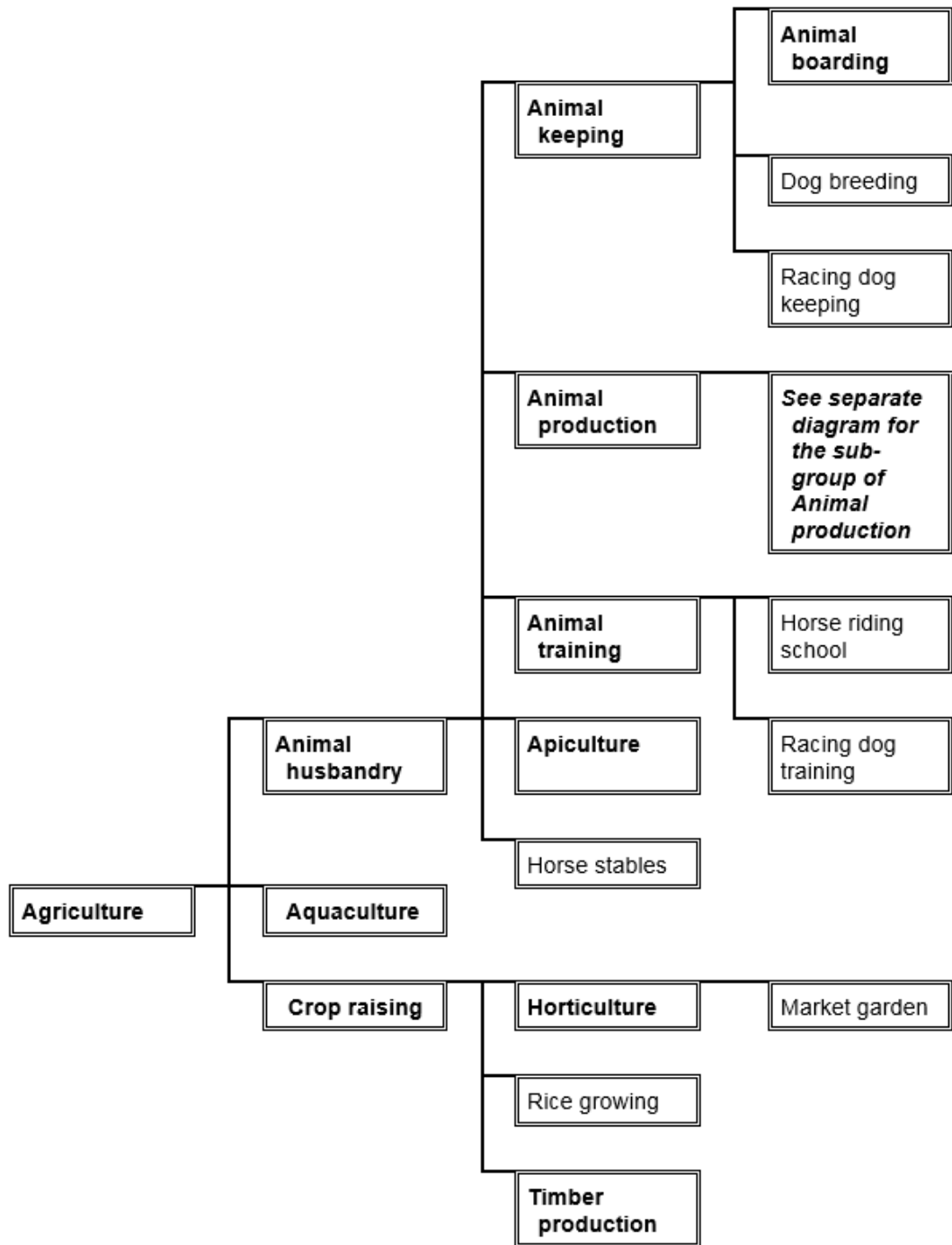
Land use terms in bold font are defined in Clause 73.03.

**73.04-1**  
26/10/2018  
VC152

### Accommodation group



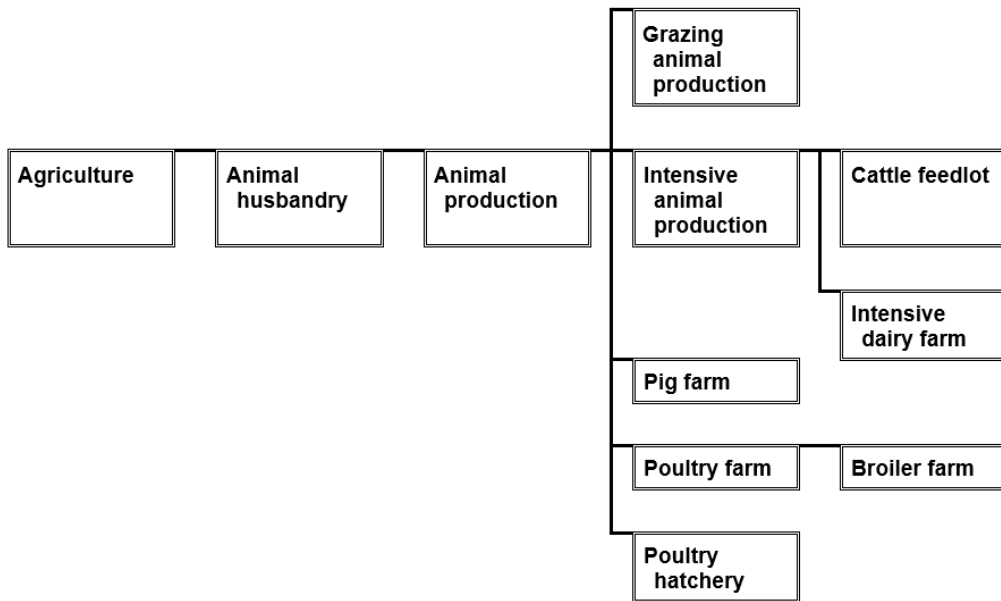
Agriculture group



**73.04-3**

21/09/2018  
VC150

**Agriculture group (sub-group of Animal production)**



**73.04-4**

21/09/2018  
VC150

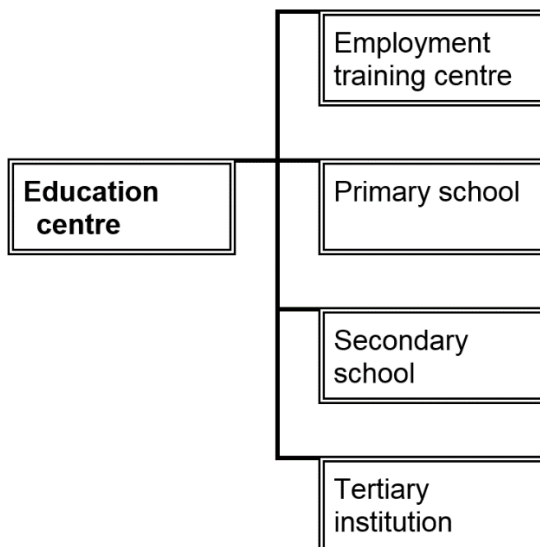
**Child care centre group**



**73.04-5**

21/09/2018  
VC150

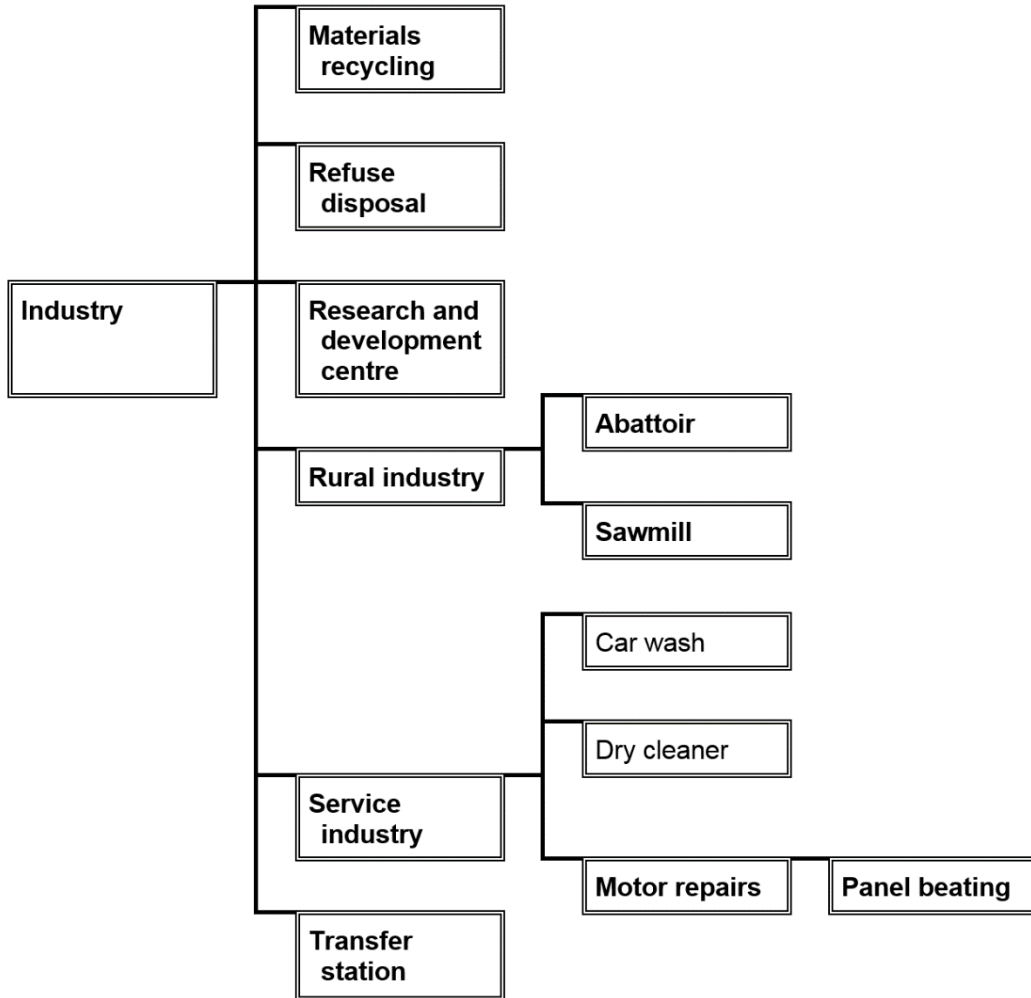
**Education centre group**



73.04-6

21/09/2018  
VC150

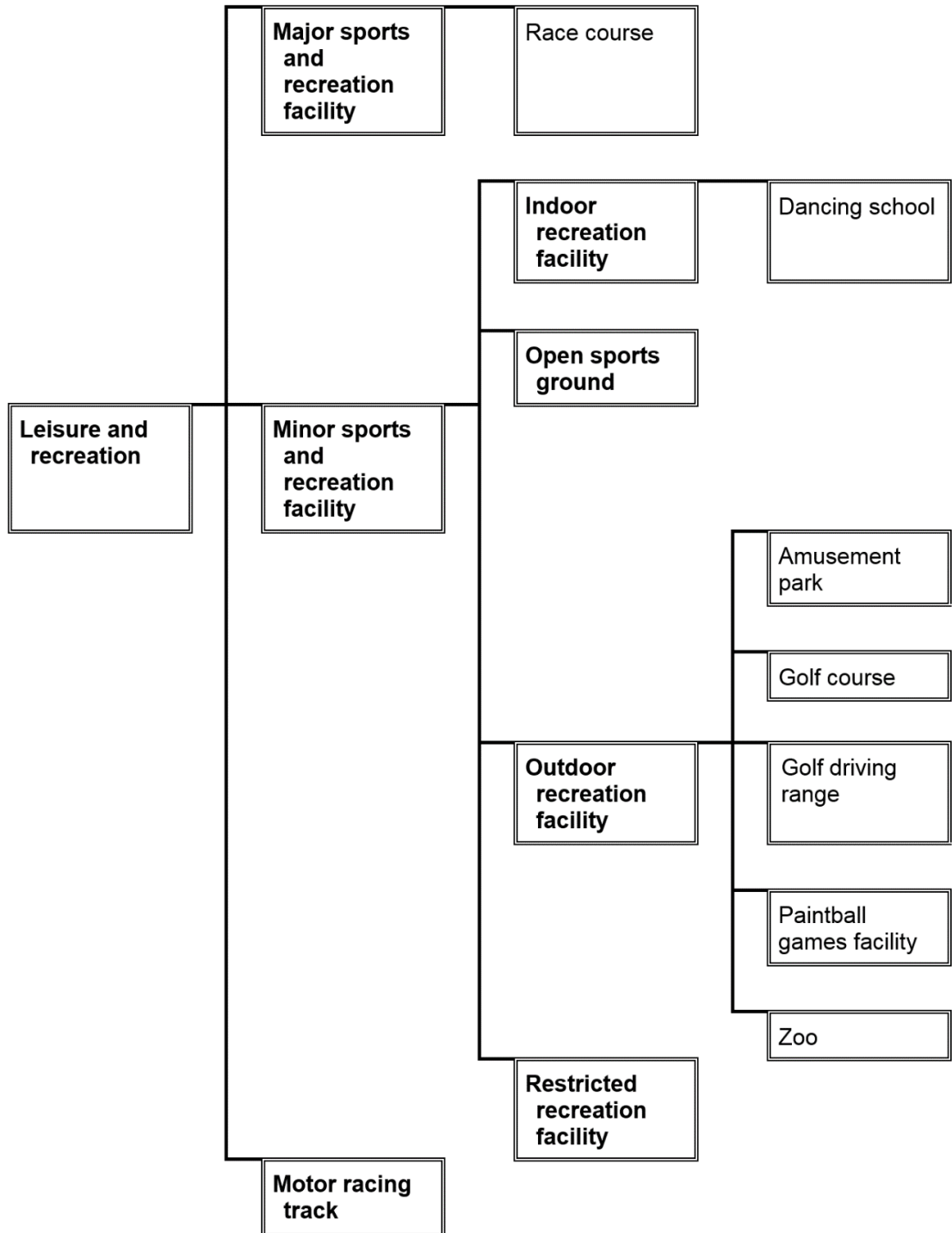
## Industry group



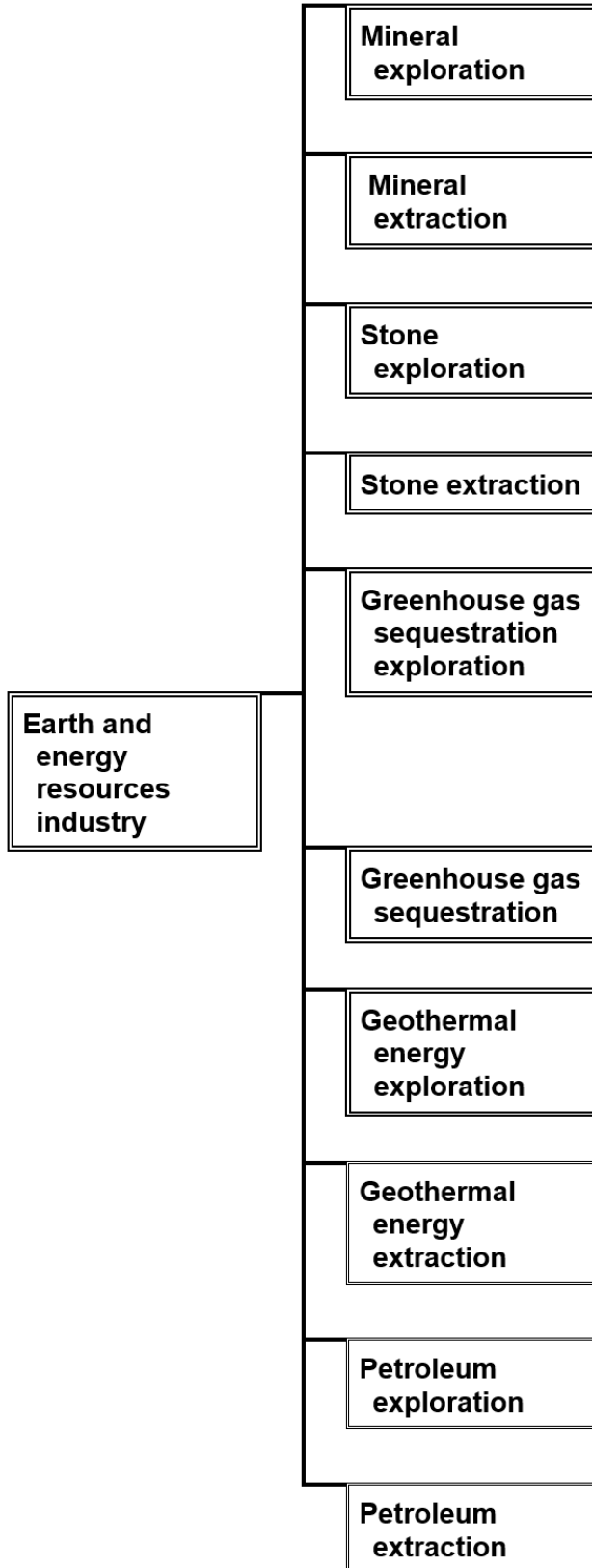
73.04-7

21/09/2018  
VC150

### Leisure and recreation group

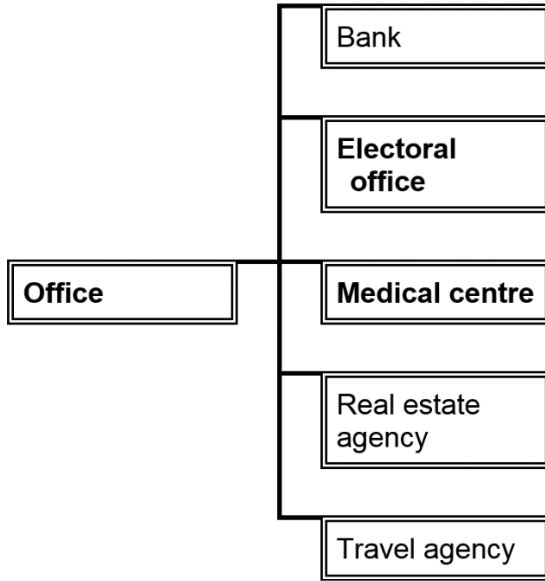


Earth and Energy Resources Group



73.04-9  
21/09/2018  
VC150

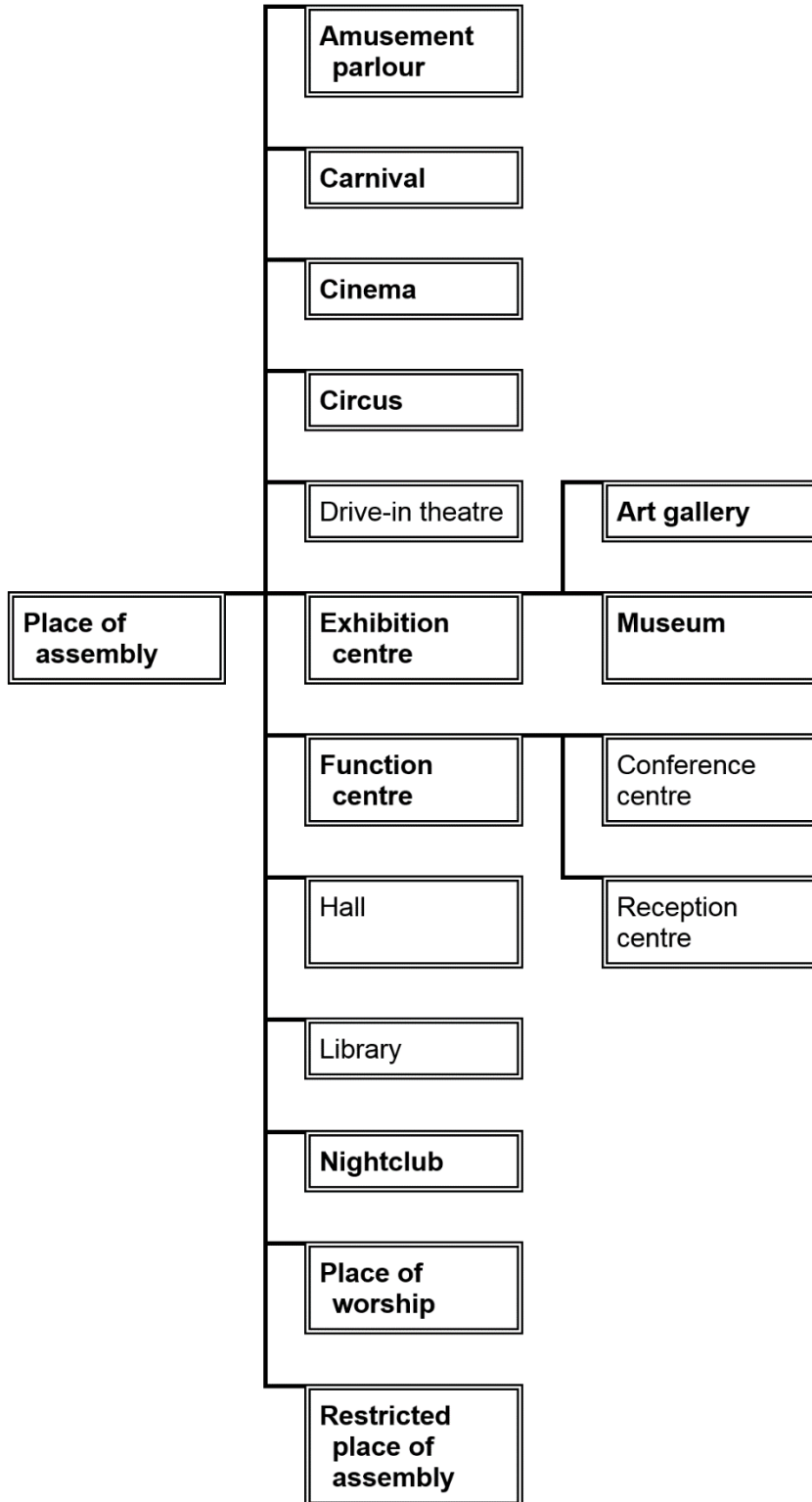
### Office group



73.04-10

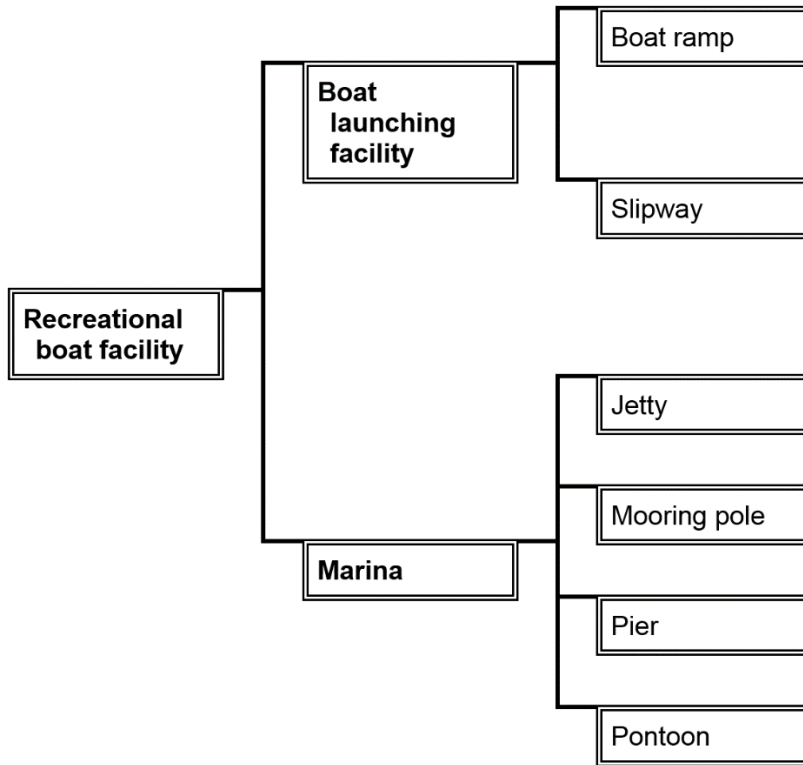
21/09/2018  
VC150

## Place of assembly group

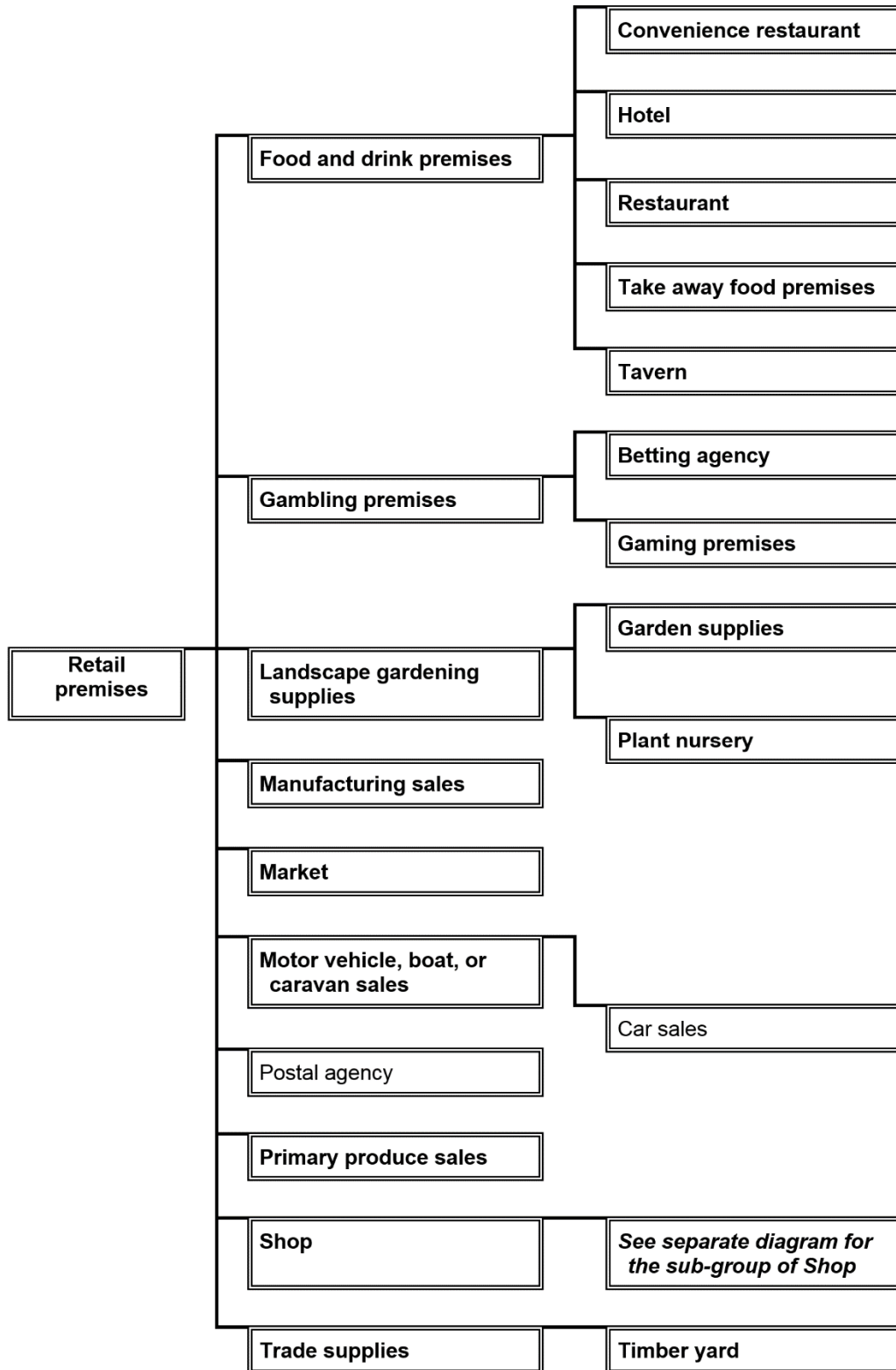




### Recreational boat facility group



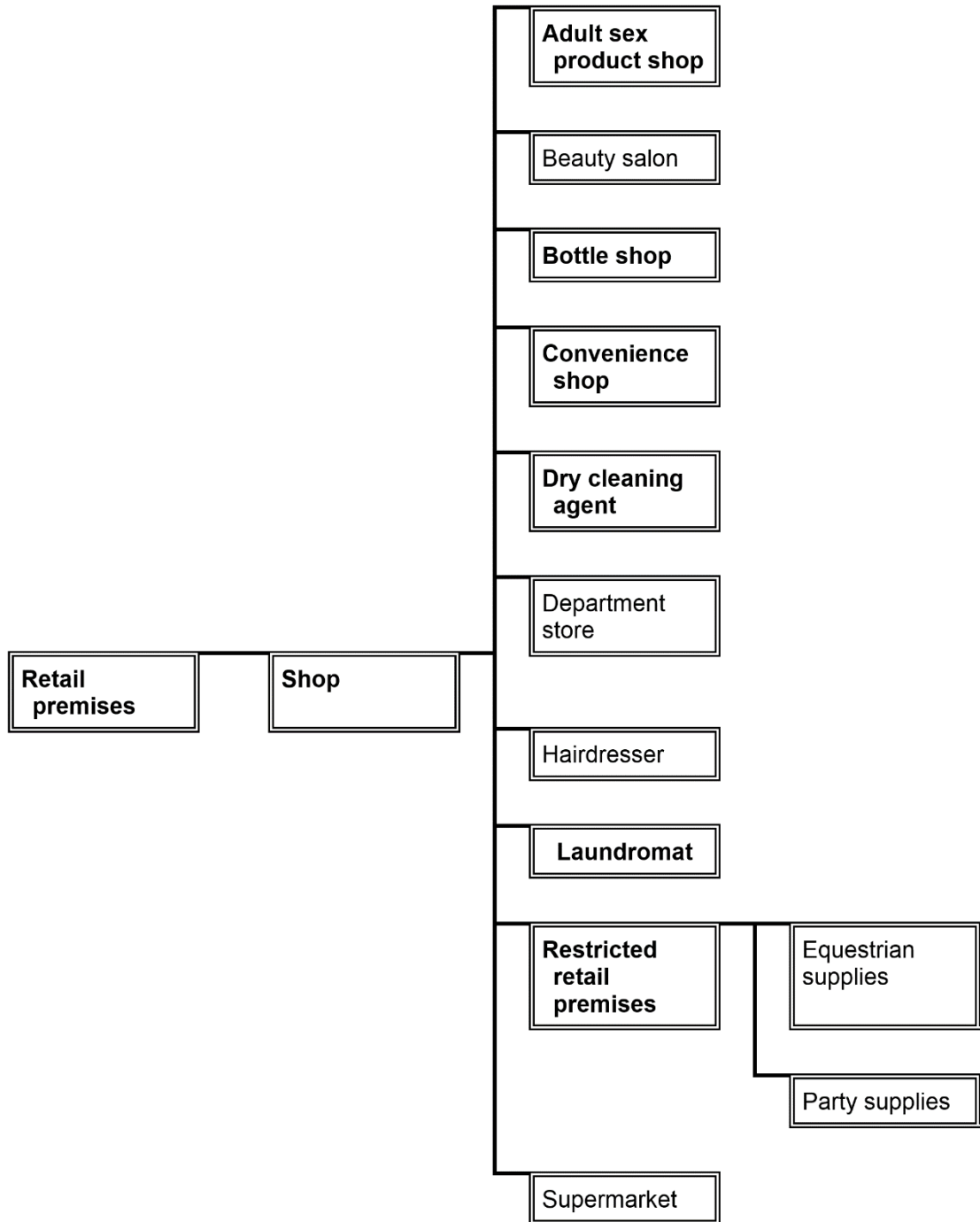
Retail premises group



73.04-13

21/09/2018  
VC150

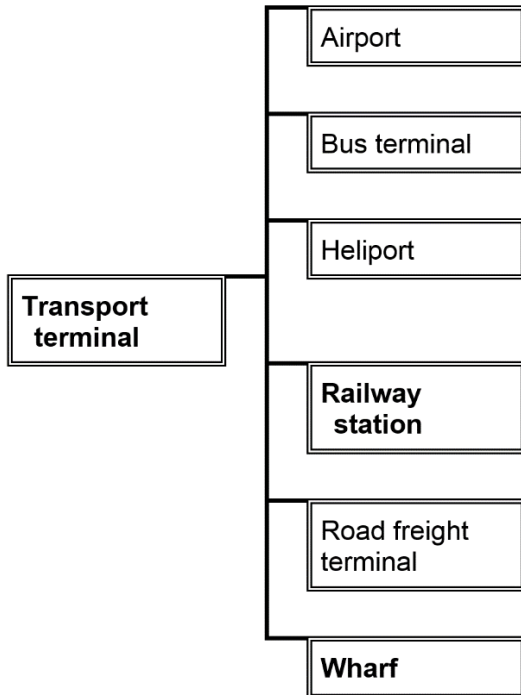
### Retail premises group (sub-group of Shop)



**73.04-14**

21/09/2018  
VC150

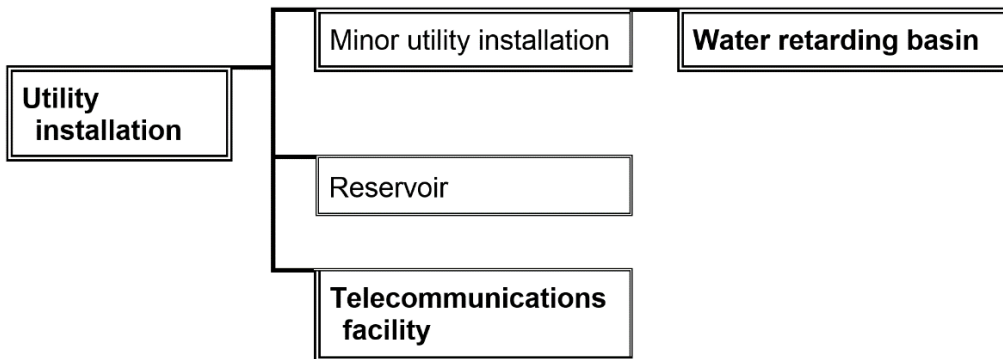
**Transport terminal group**



**73.04-15**

21/09/2018  
VC150

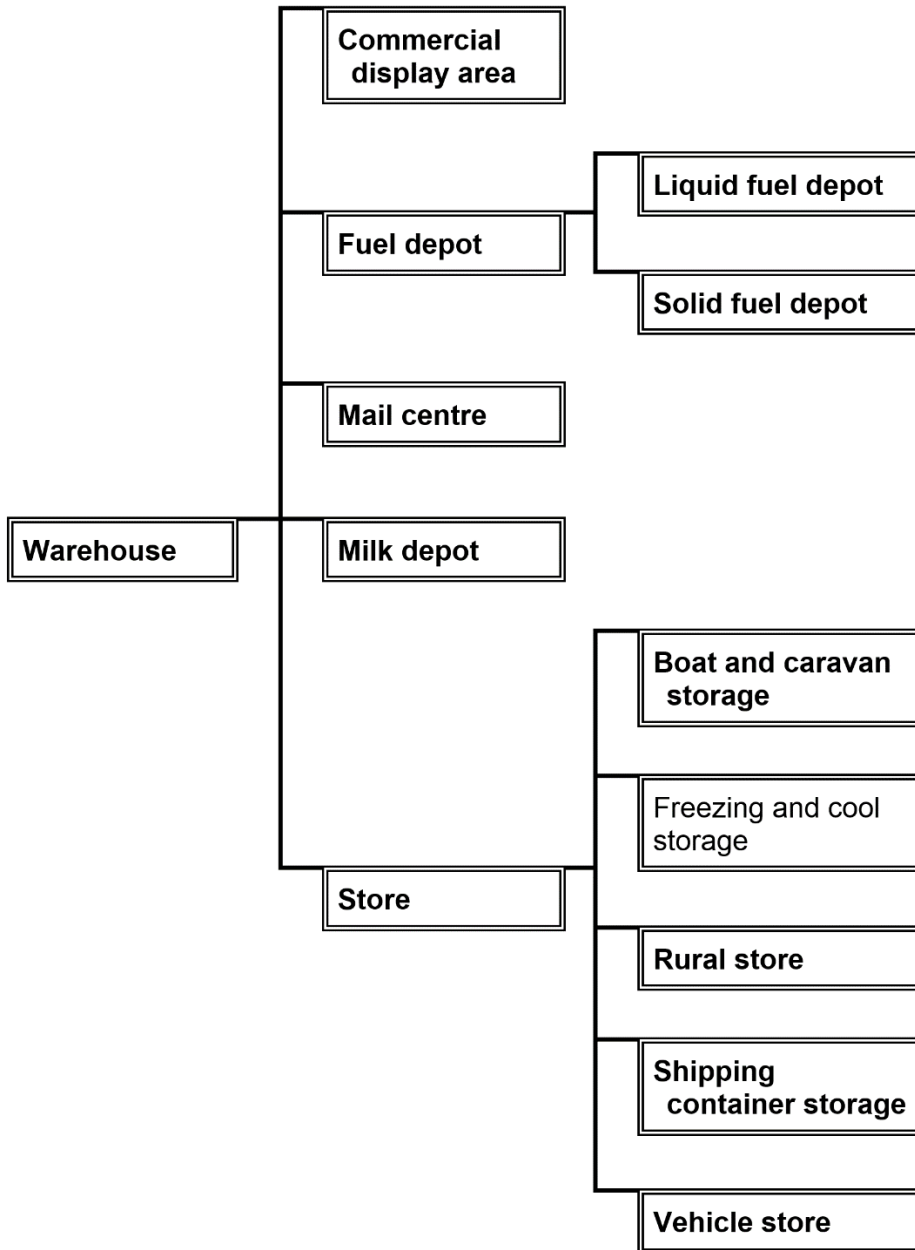
**Utility installation group**



**73.04-16**

21/09/2018  
VC150

**Warehouse group**



**73.04-17**

21/09/2018  
VC150

**Renewable Energy Group**



**73.04-18**

21/09/2018  
VC150

**Land use terms that are not nested**

**Art and craft centre**

**Brothel**

**Car park**

**Cemetery**

**Cinema based entertainment facility**

**Crematorium**

**Display home**

**Emergency services facility**

**Freeway service centre**

**Funeral parlour**

**Helicopter landing site**

**Home based business**

**Hospital**

**Natural systems**

**Research centre**

**Saleyard**

**Service station**

**Sign**

**Tramway**

**Veterinary centre**

**Winery**

---