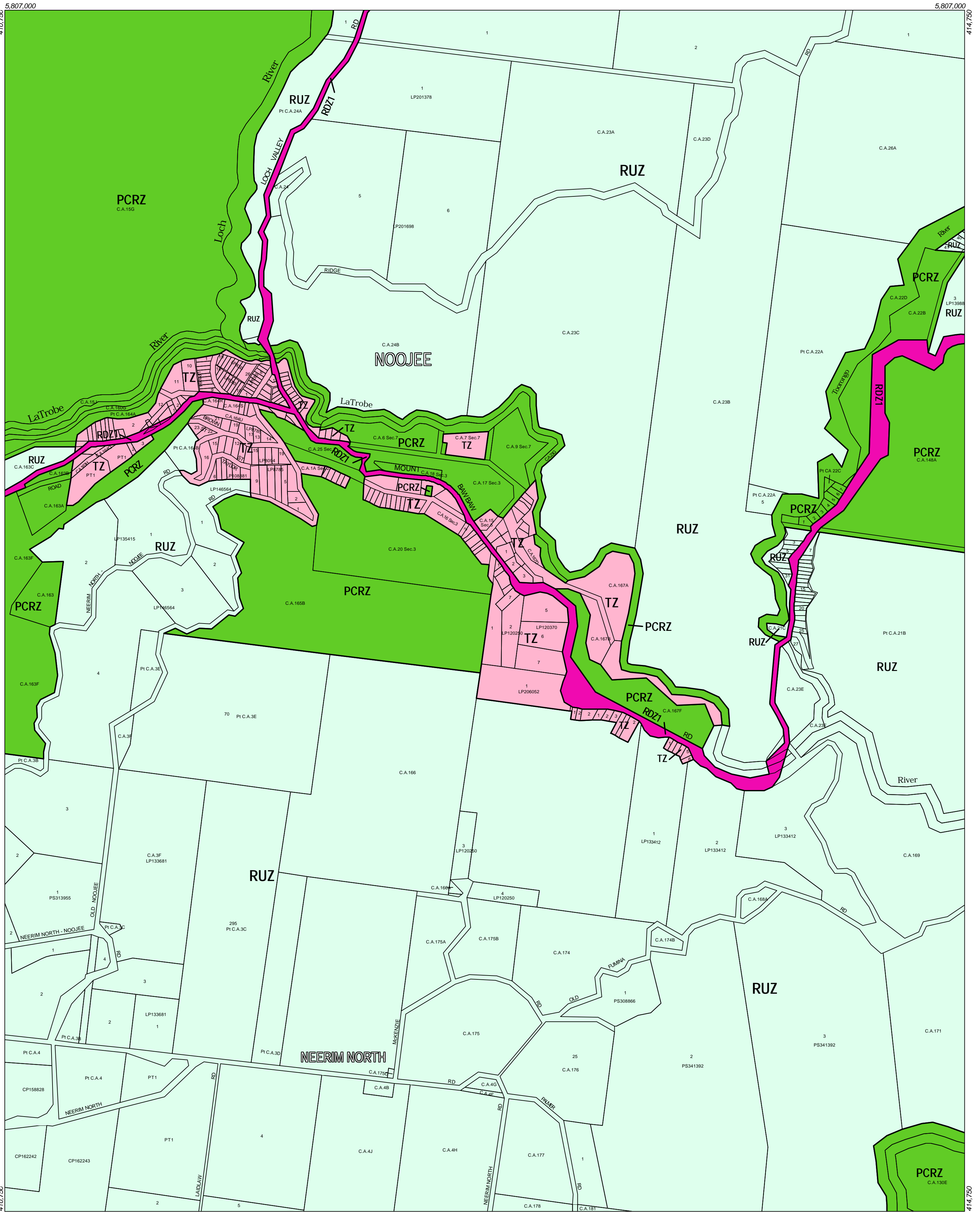


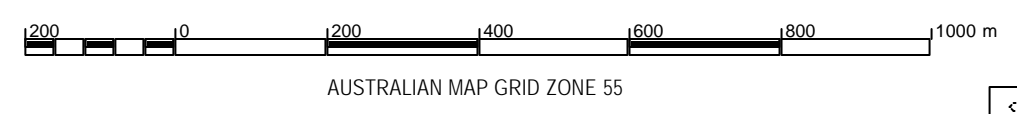
# BAW BAW PLANNING SCHEME - LOCAL PROVISION



This publication is copyright. No part may be reproduced by any process except in accordance with the provisions of the Copyright Act 1968 of the State of Victoria.

This map should be read in conjunction with additional Planning Overlay Maps (if applicable) as indicated on the INDEX TO MAPS.

<b>Public Land</b>	Public Conservation And Resource Zone
<b>Rural</b>	Rural Zone
<b>Residential</b>	Township Zone
<b>Road Zone Category 1</b>	Road Zone Category 1



Amendment C17  
Printed: 2016/2003

