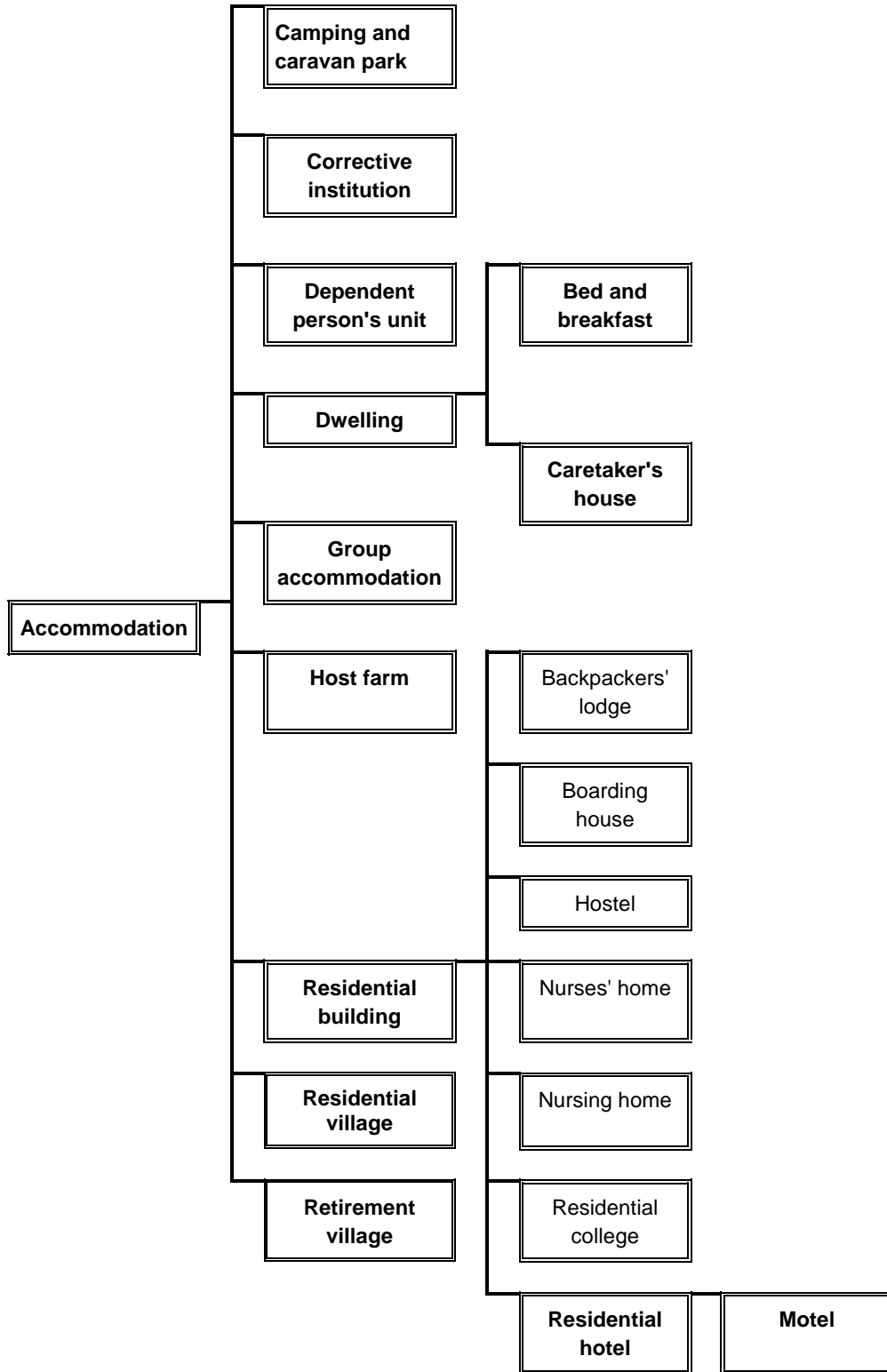


**75                    NESTING DIAGRAMS**

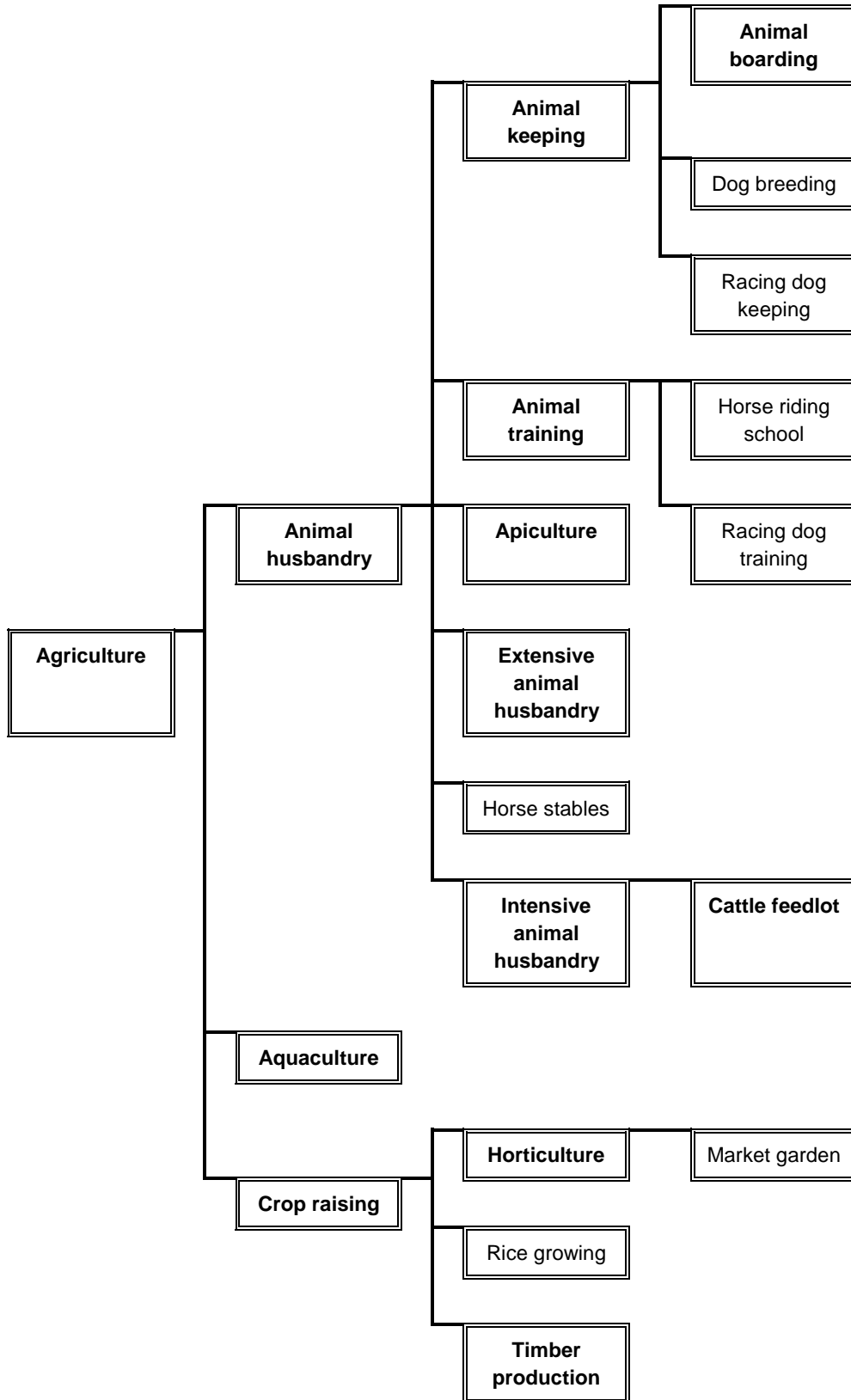
The information in the table to Clause 74 is set out in the following diagrams as a means of indicating the nesting of land use terms.

Land use terms that are not nested are listed separately. If there is any inconsistency between the table and the diagrams or list, the table to Clause 74 prevails.

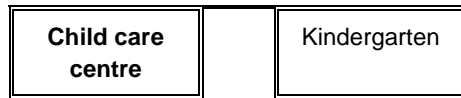
**Accommodation group**



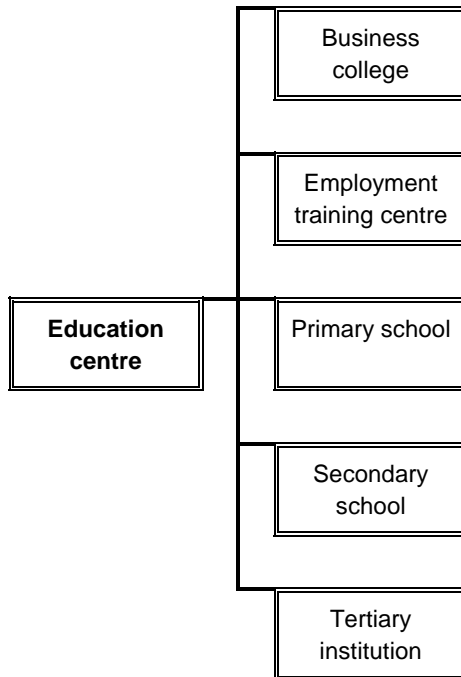
**Agriculture group**



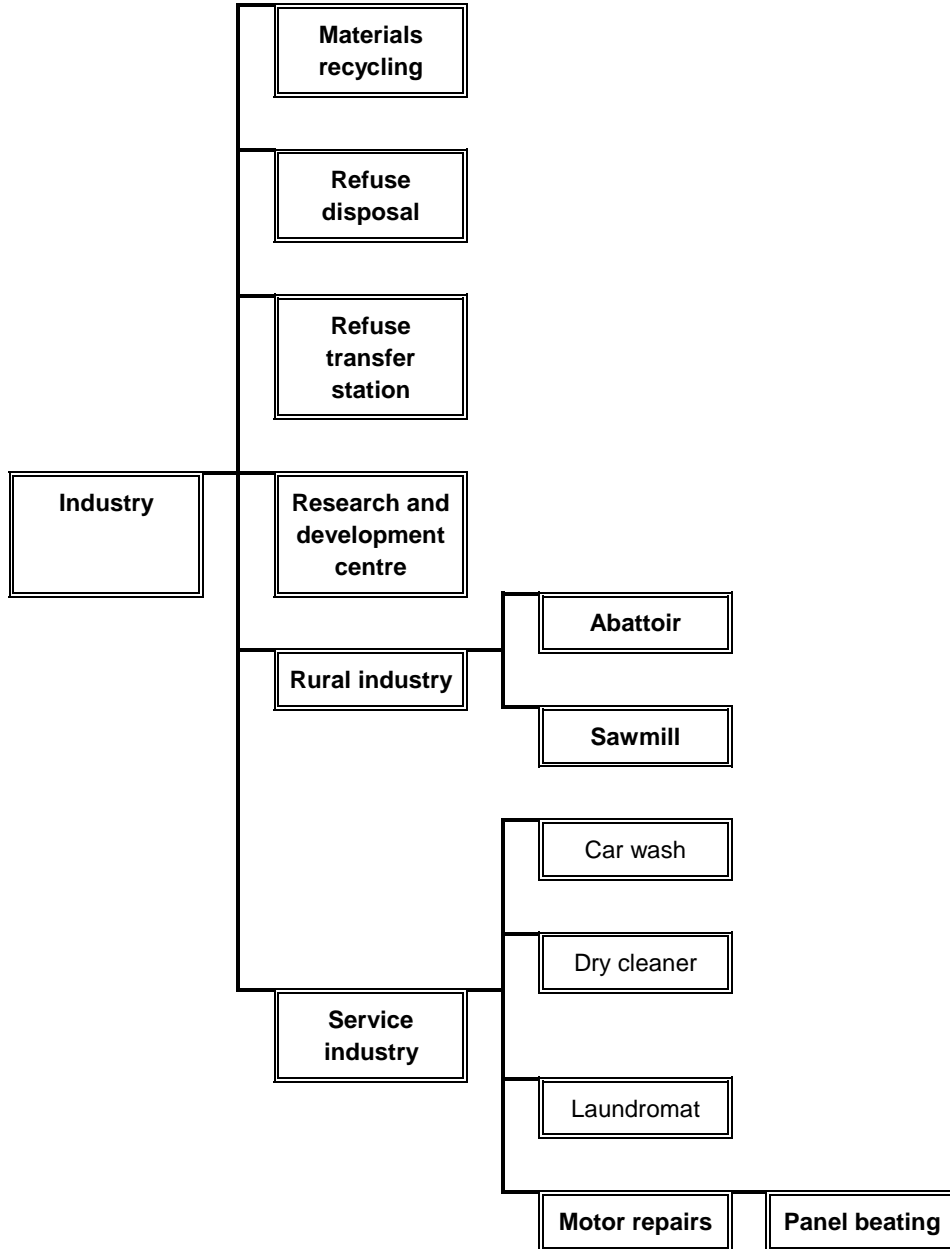
**Child care centre group**



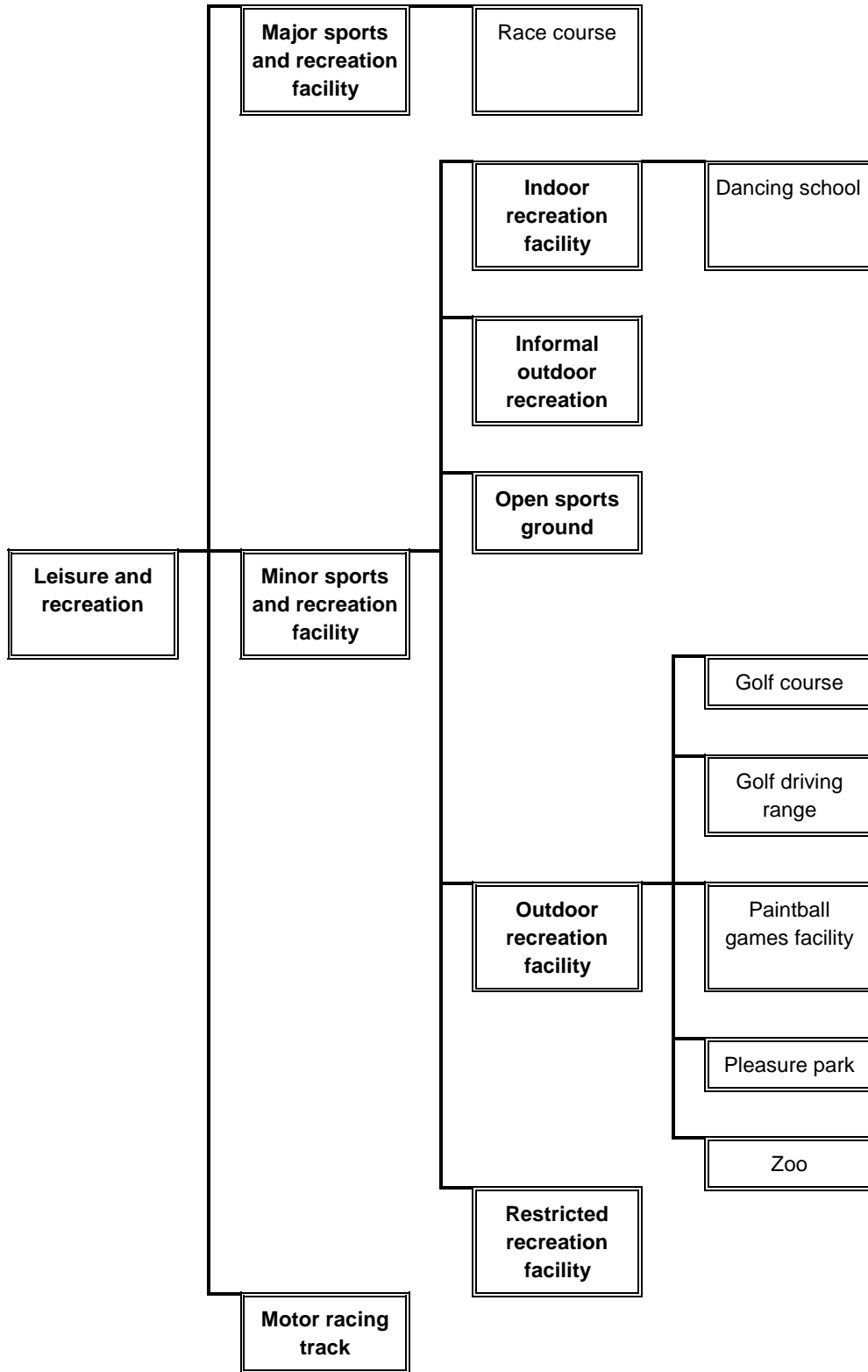
**Education centre group**



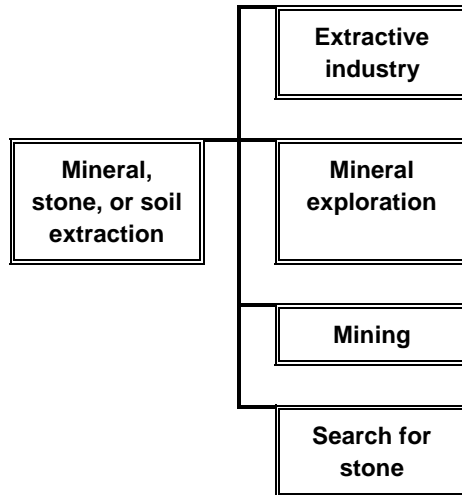
**Industry group**



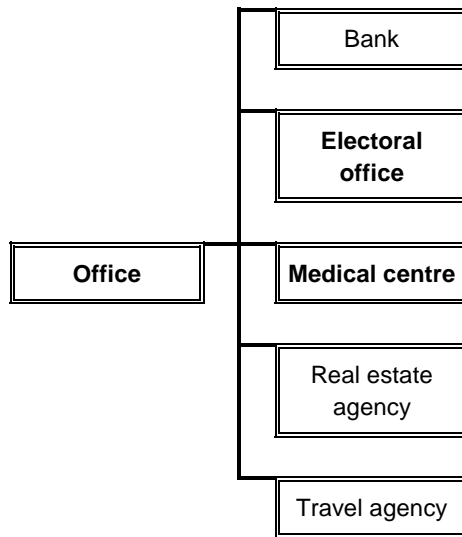
**Leisure and recreation group**



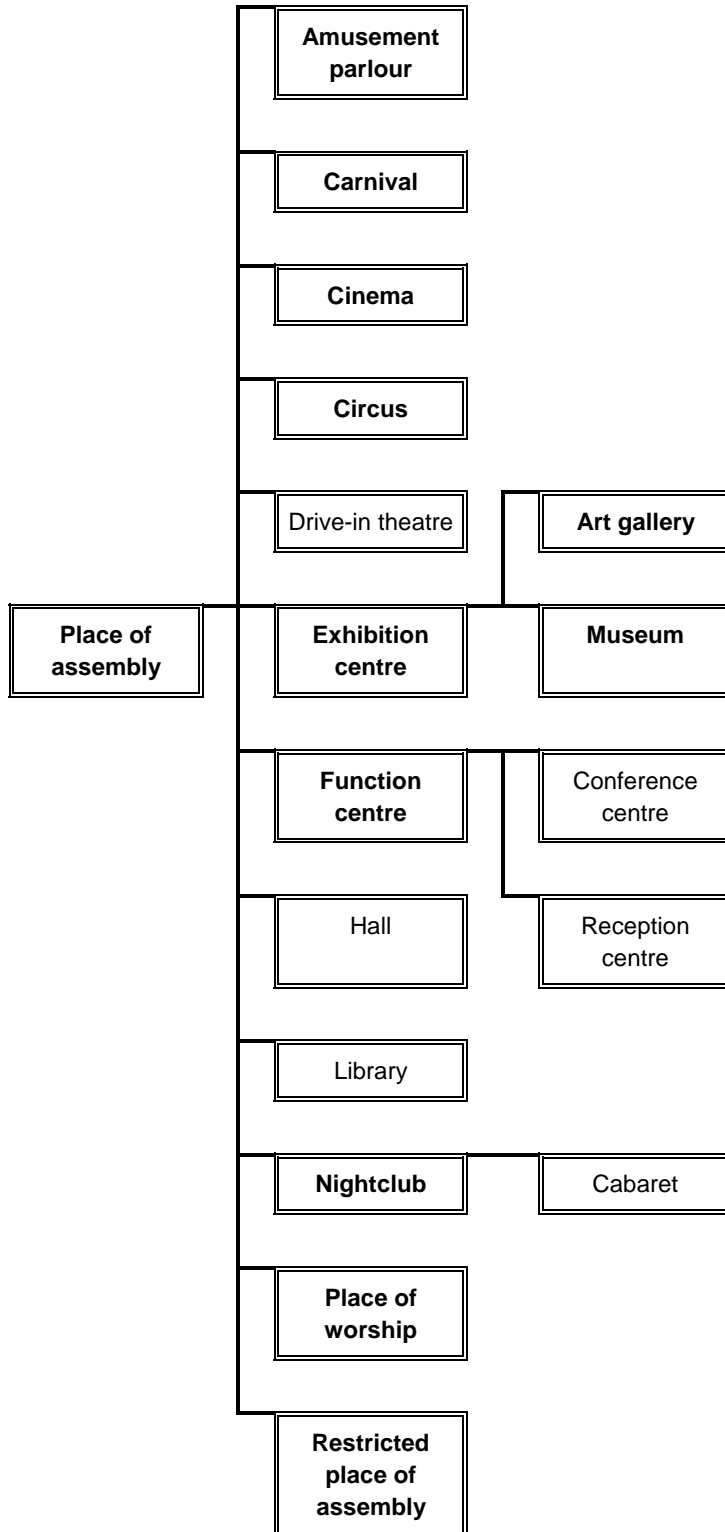
**Mineral, stone, or soil extraction group**



**Office group**

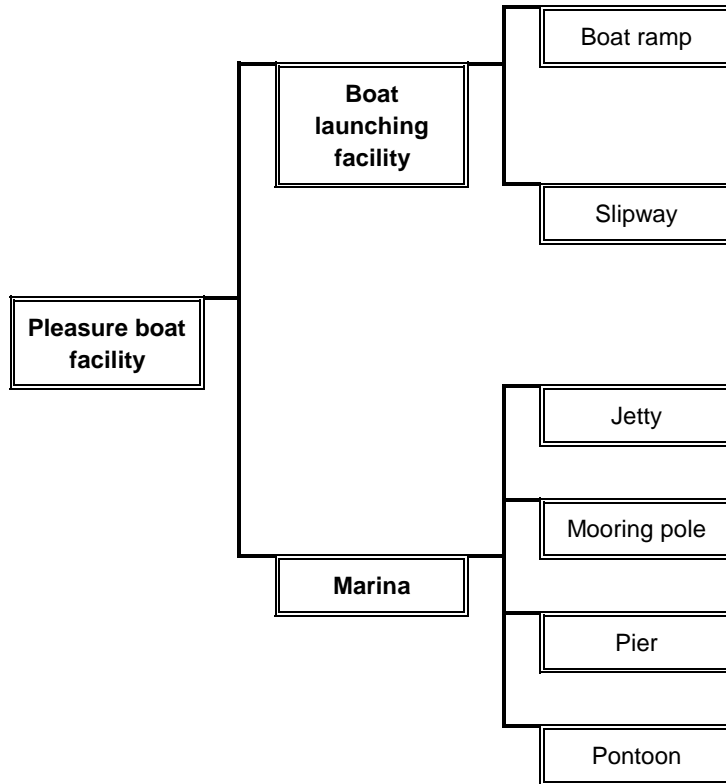


**Place of assembly group**

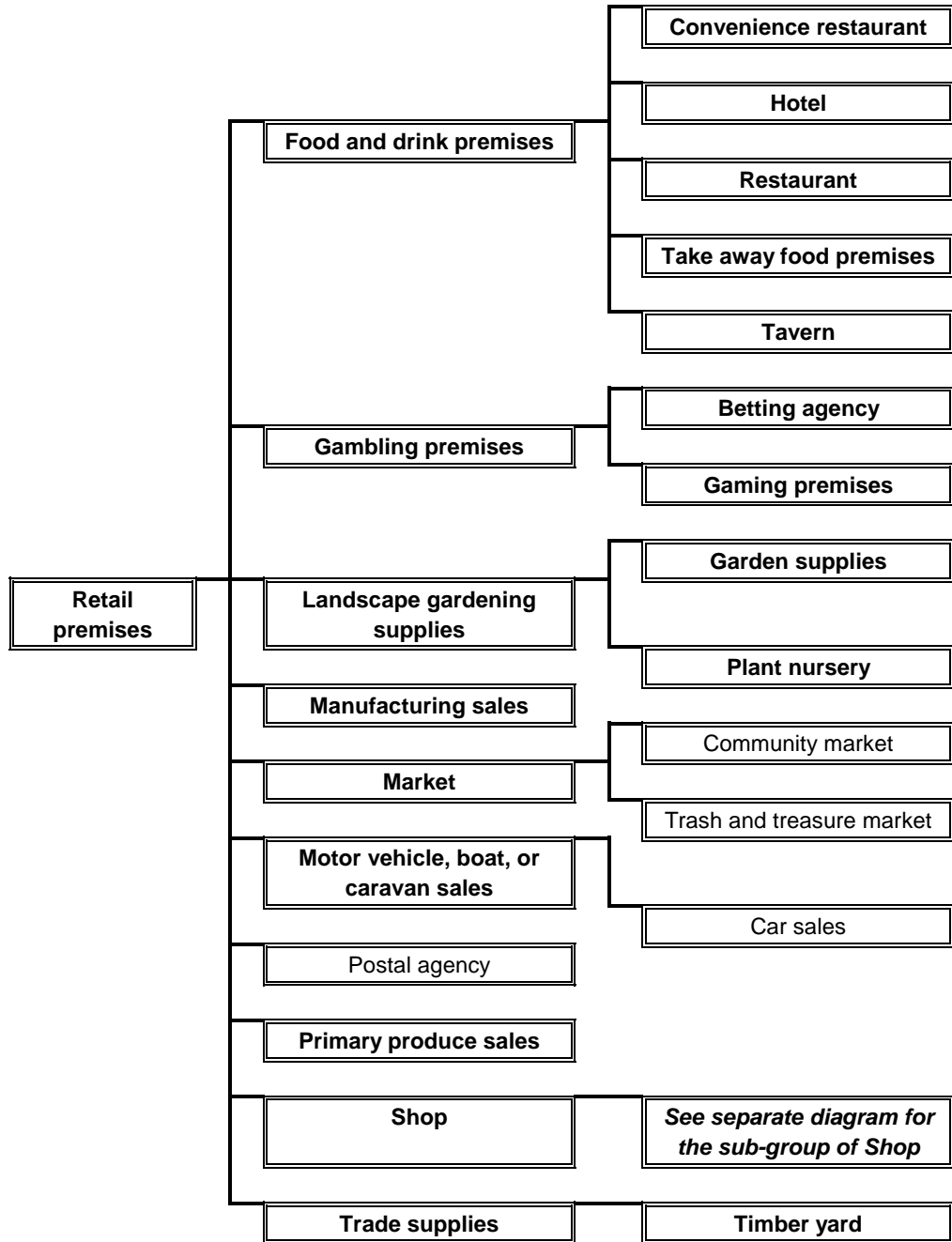




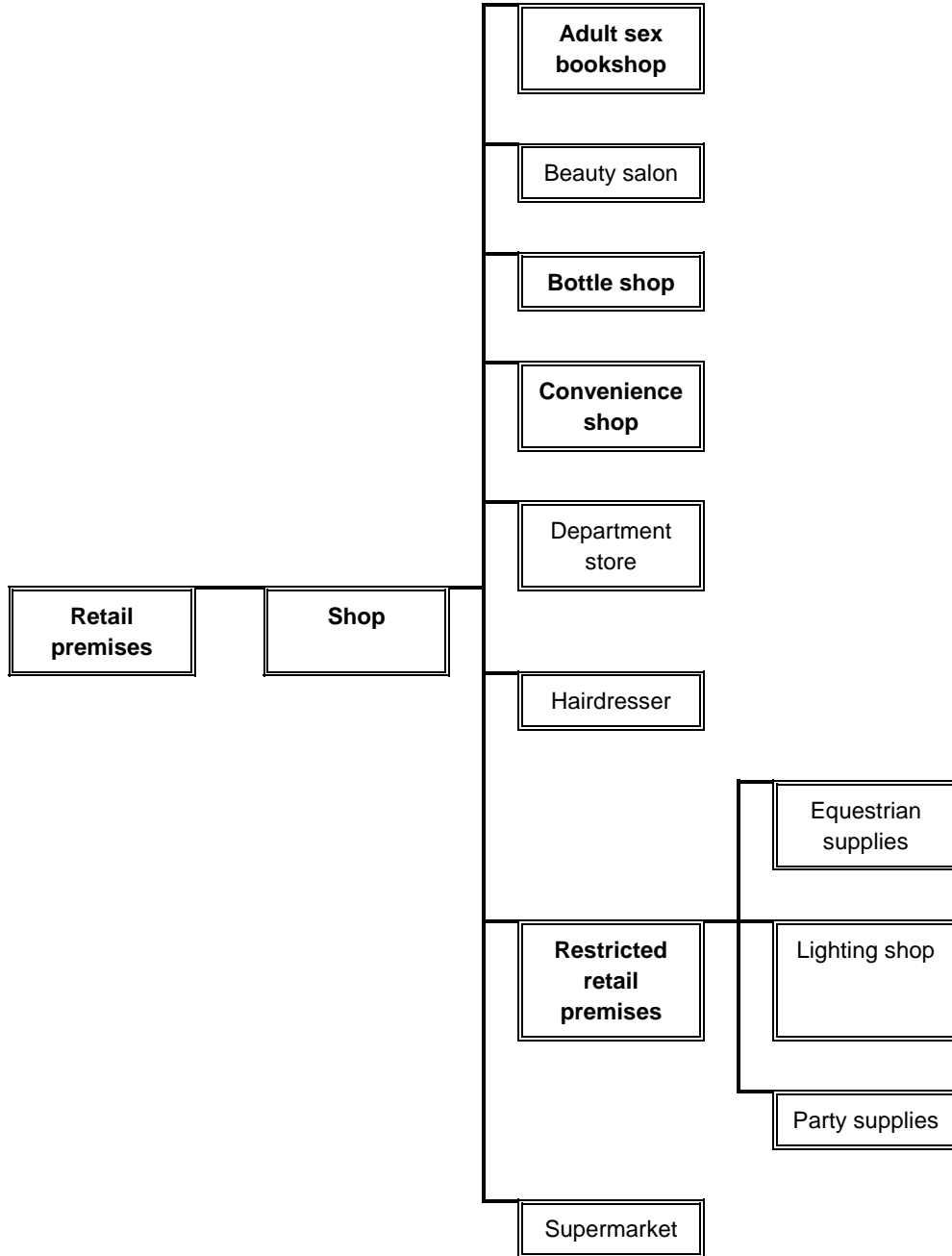
**Pleasure boat facility group**



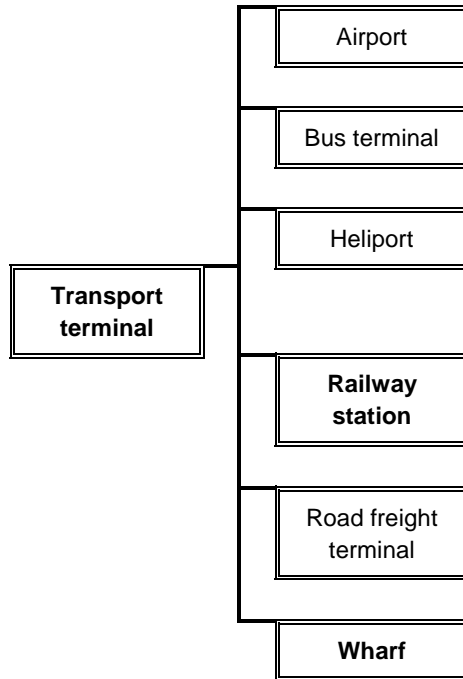
**Retail premises group**



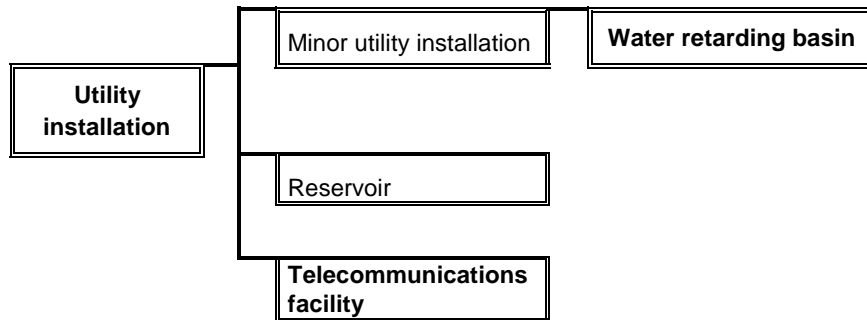
**Retail premises group (sub-group of Shop)**



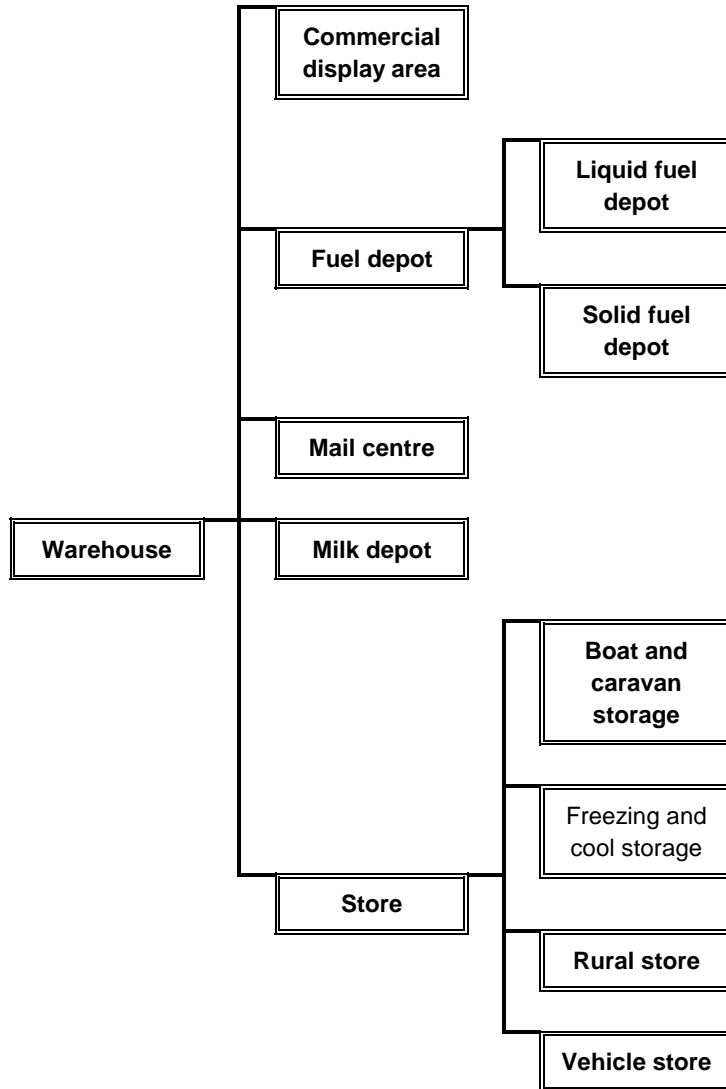
### Transport terminal group



### Utility installation group



**Warehouse group**



**Land use terms that are not nested**

**Art and craft centre**

**Brothel**

**Car park**

**Cemetery**

**Cinema based entertainment facility**

**Crematorium**

**Display home**

**Freeway service centre**

**Funeral parlour**

**Home occupation**

**Hospital**

**Natural systems**

**Research centre**

**Saleyard**

**Service station**

**Veterinary centre**

**Winery**