

**75**

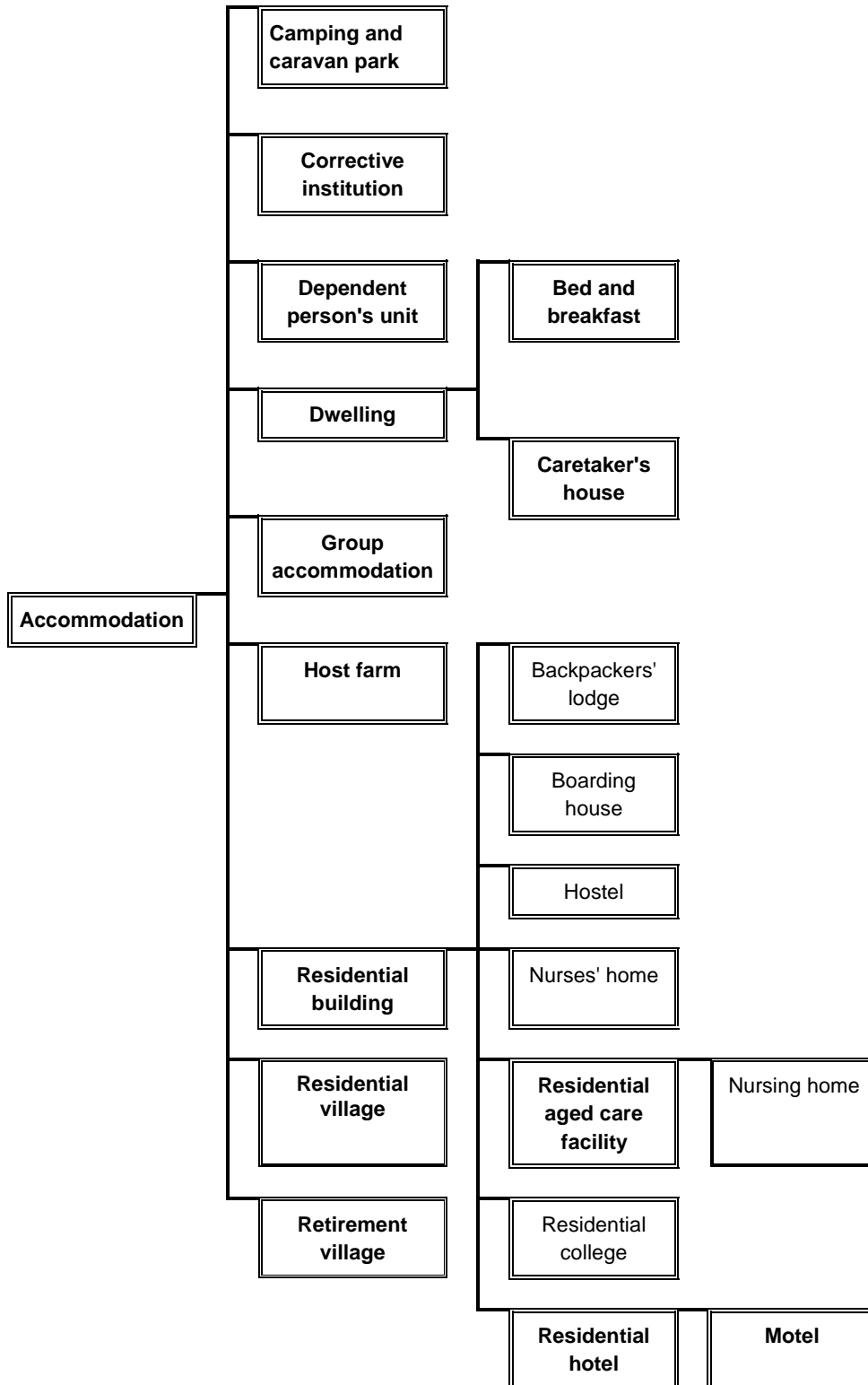
15/12/2008  
VC50

**NESTING DIAGRAMS**

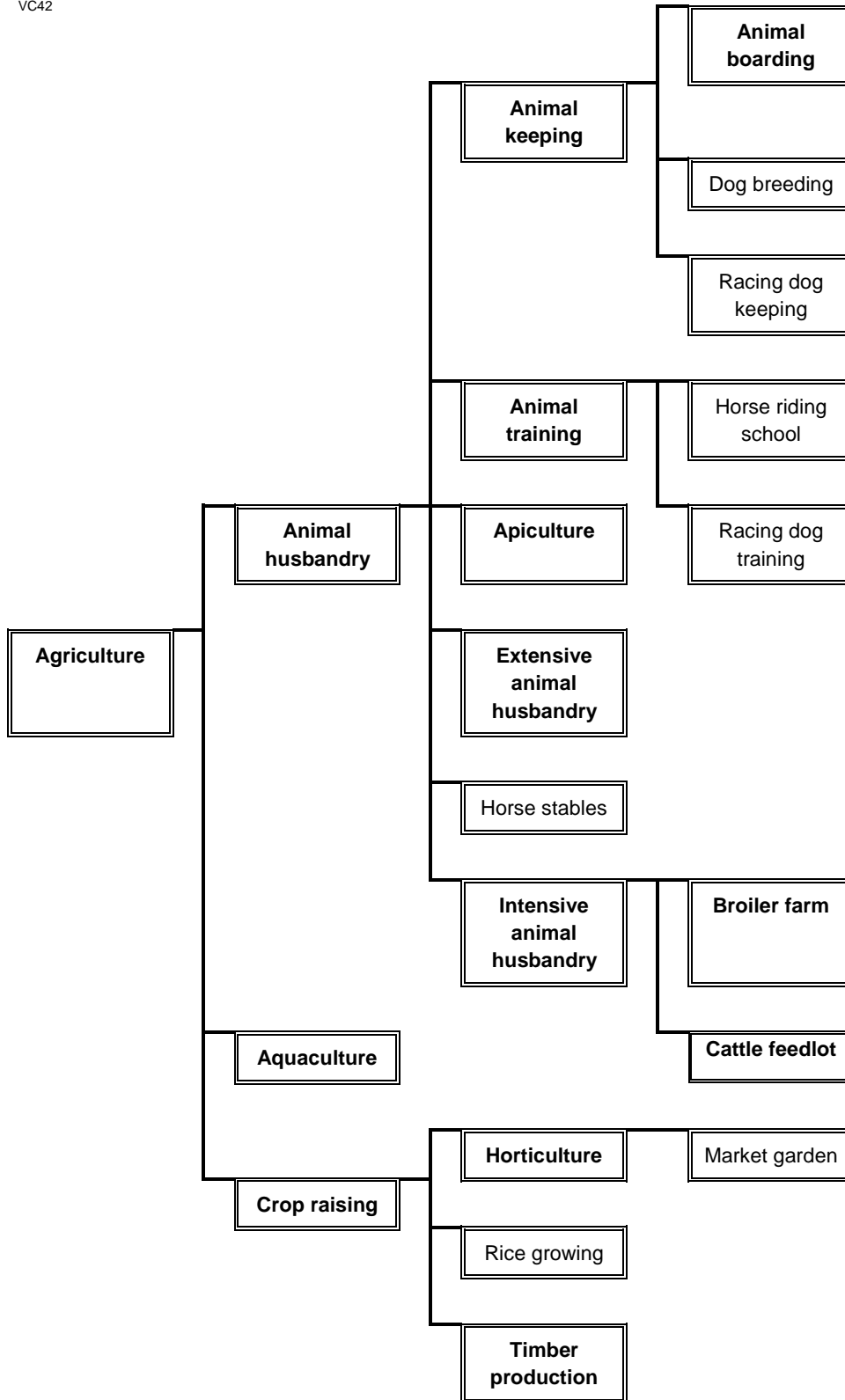
The information in the table to Clause 74 is set out in the following diagrams as a means of indicating the nesting of land use terms.

Land use terms that are not nested are listed separately. If there is any inconsistency between the table and the diagrams or list, the table to Clause 74 prevails.

**ACCOMMODATION GROUP**

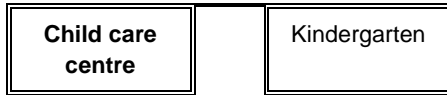


**AGRICULTURE GROUP**



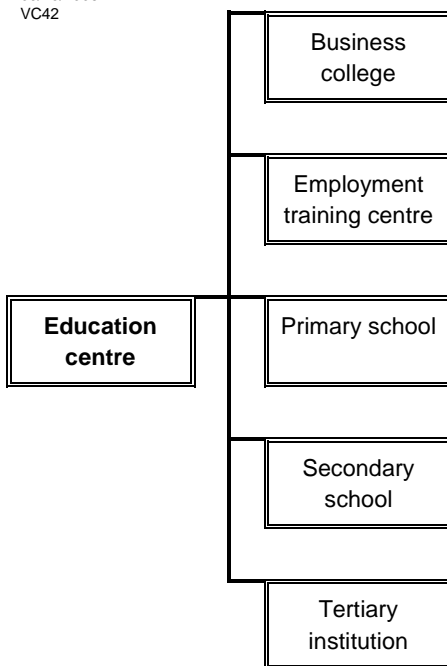
**75.03 CHILD CARE CENTRE GROUP**

09/10/2006  
VC42



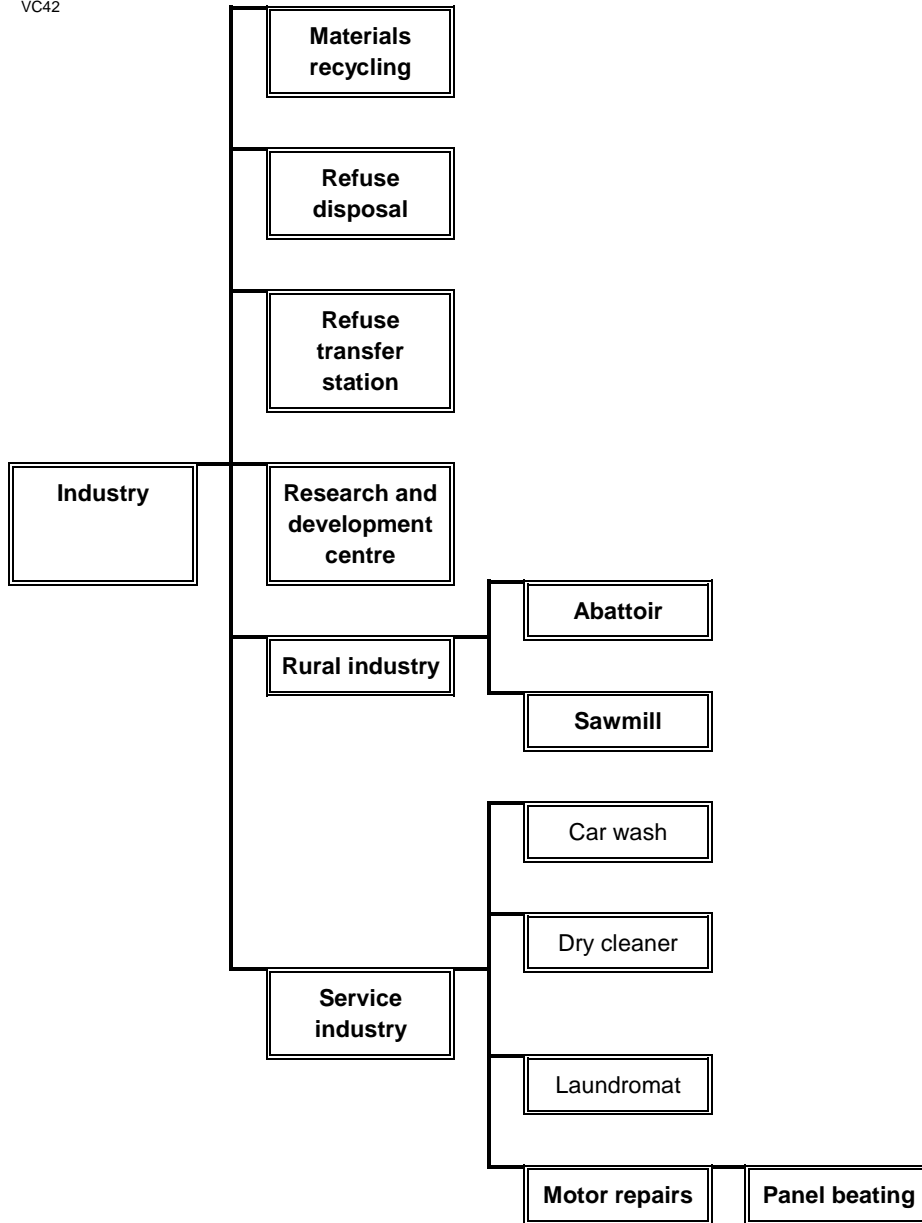
**75.04 EDUCATION CENTRE GROUP**

09/10/2006  
VC42



75.05  
09/10/2006  
VC42

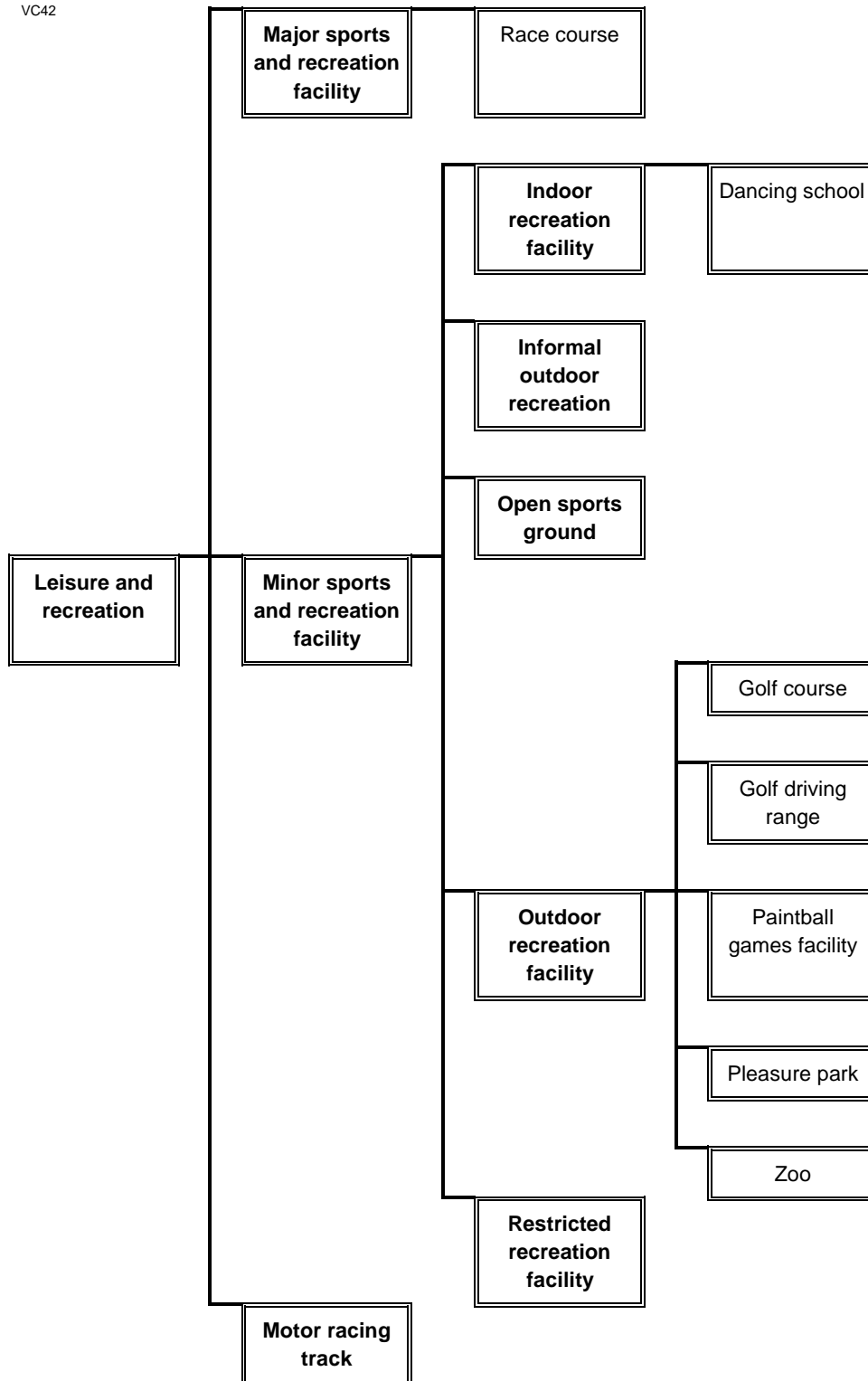
**INDUSTRY GROUP**



**75.06**

09/10/2006  
VC42

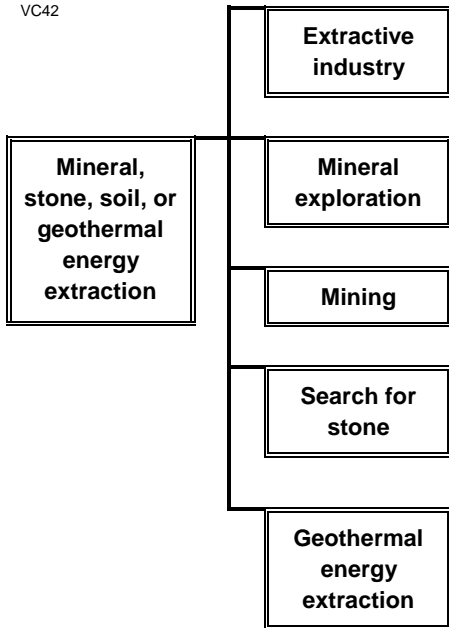
**LEISURE AND RECREATION GROUP**



**75.07**

**EARTH RESOURCE EXPLORATION AND DEVELOPMENT GROUP**

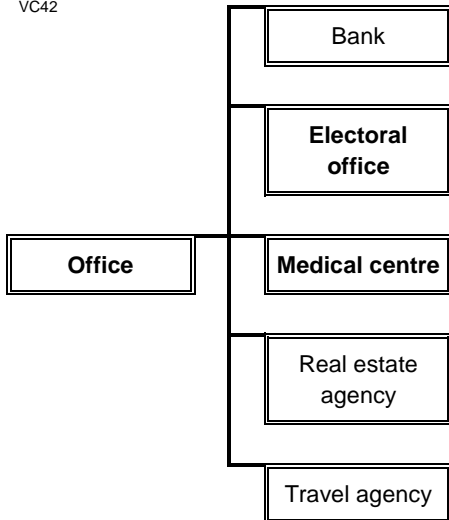
09/10/2006  
VC42



**75.08**

**OFFICE GROUP**

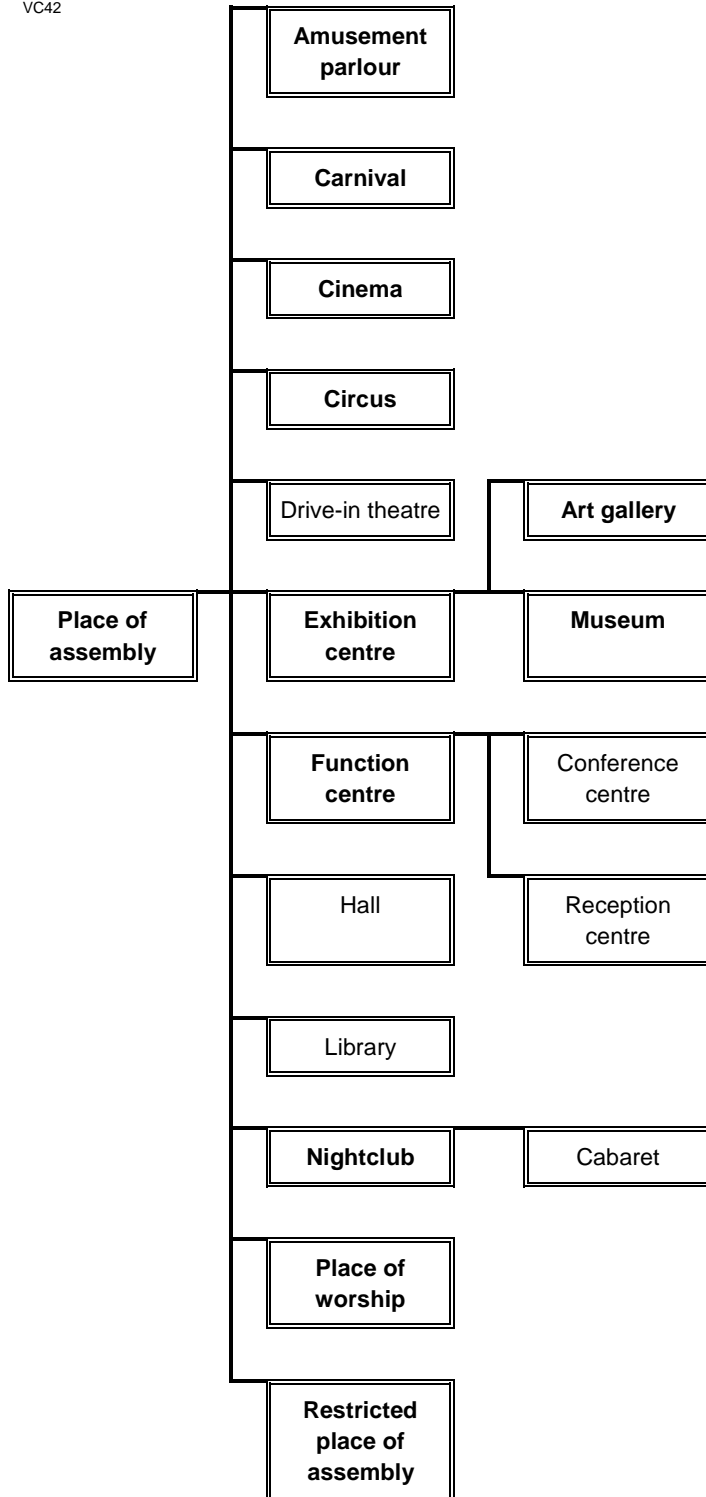
09/10/2006  
VC42



**75.09**

09/10/2006  
VC42

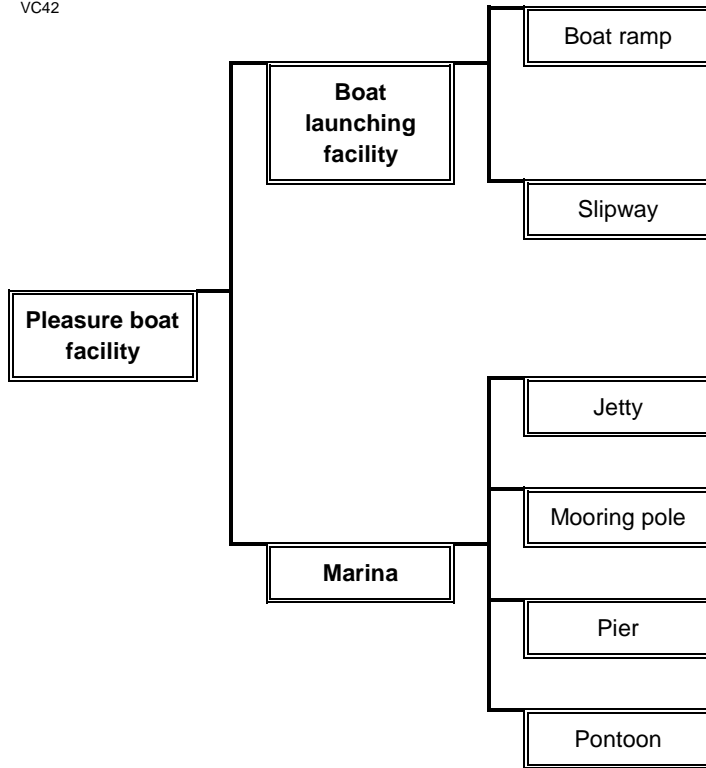
**PLACE OF ASSEMBLY GROUP**





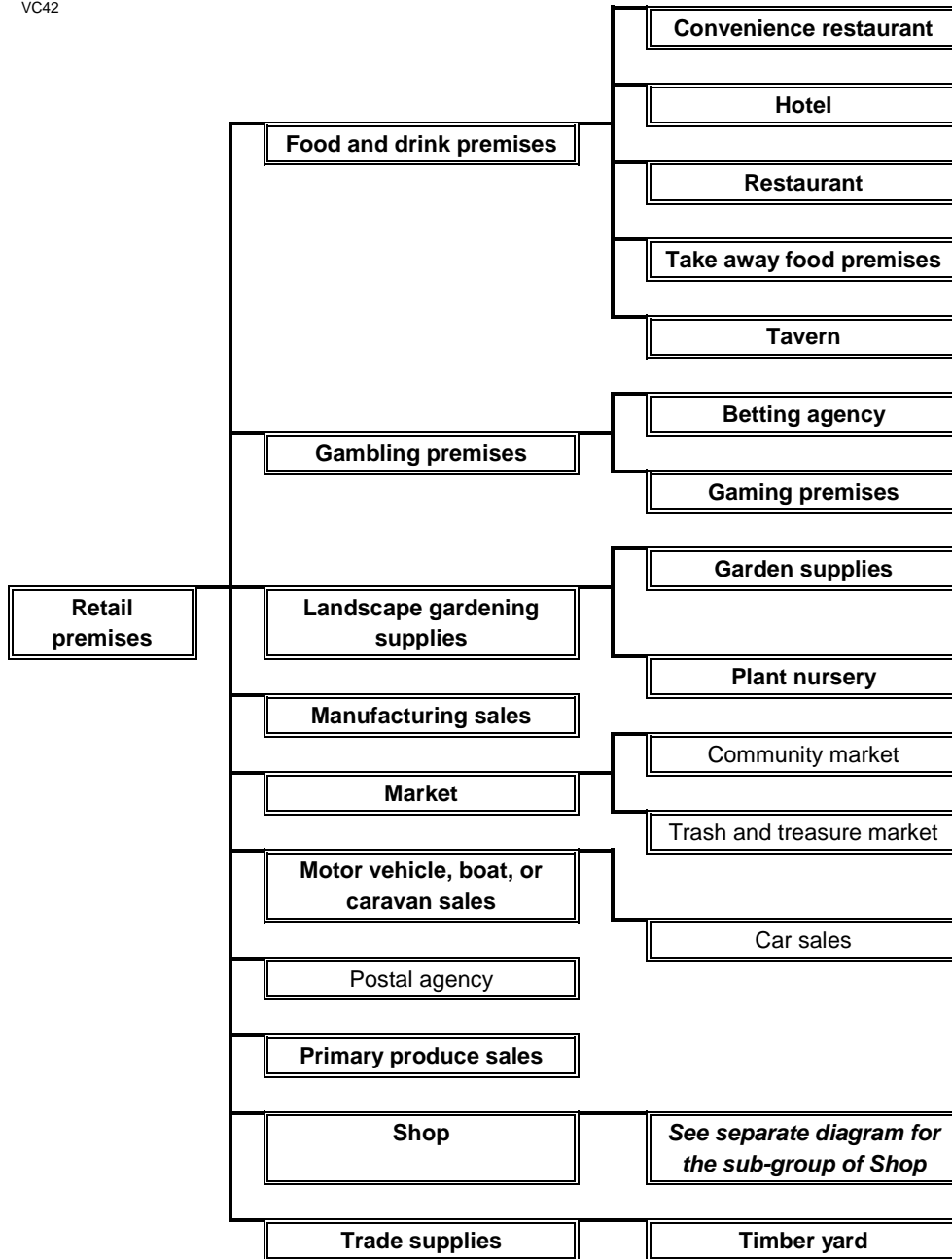
75.10  
09/10/2006  
VC42

### PLEASURE BOAT FACILITY GROUP



75.11  
09/10/2006  
VC42

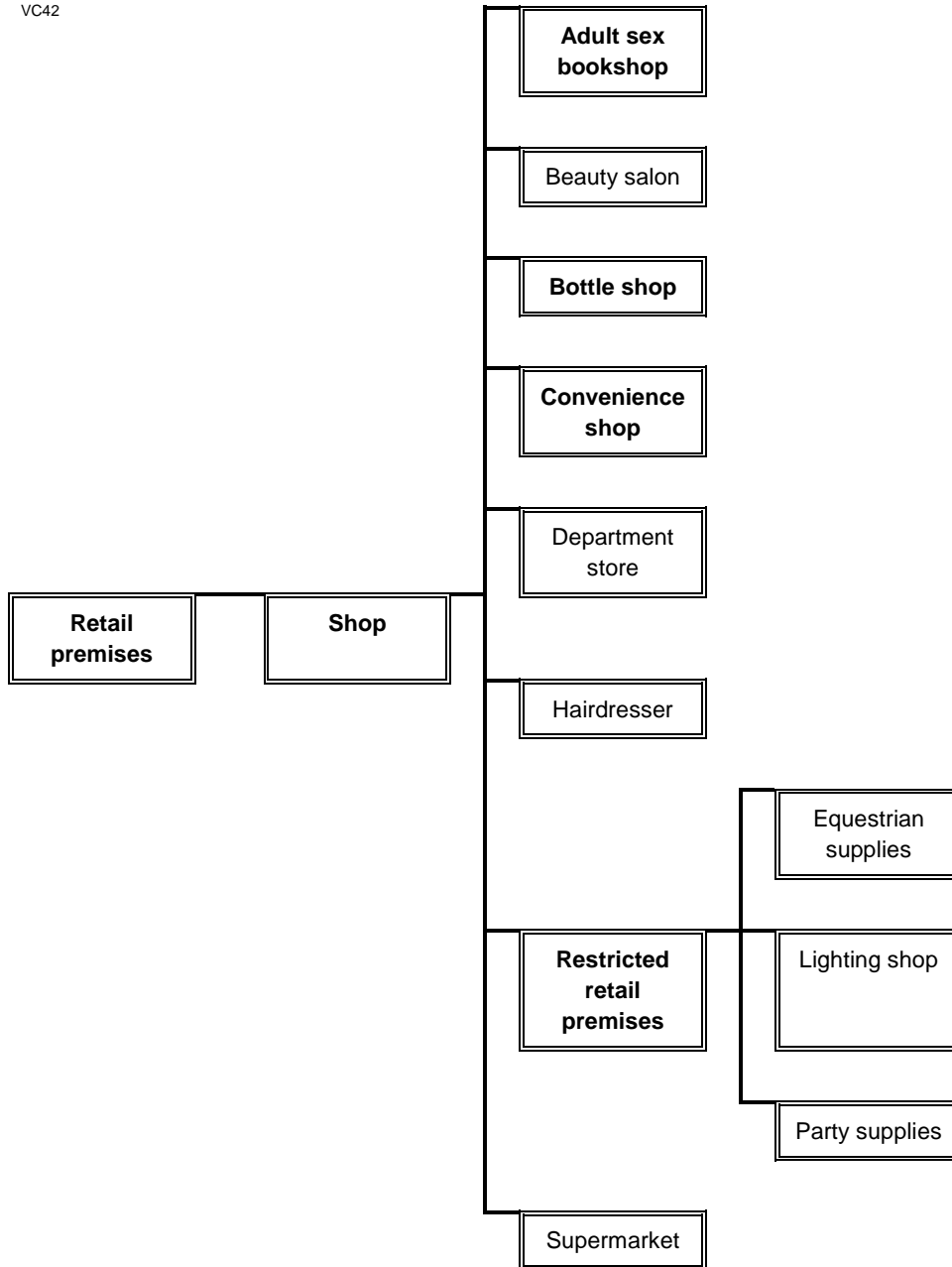
### RETAIL PREMISES GROUP



**75.12**

09/10/2006  
VC42

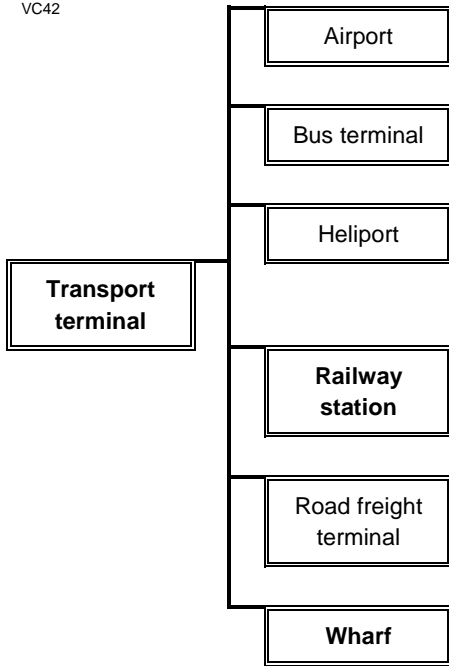
**RETAIL PREMISES GROUP (SUB-GROUP OF SHOP)**



**75.13**

09/10/2006  
VC42

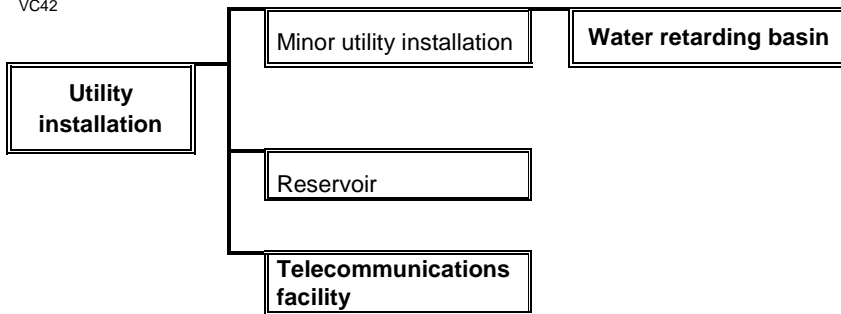
**TRANSPORT TERMINAL GROUP**



**75.14**

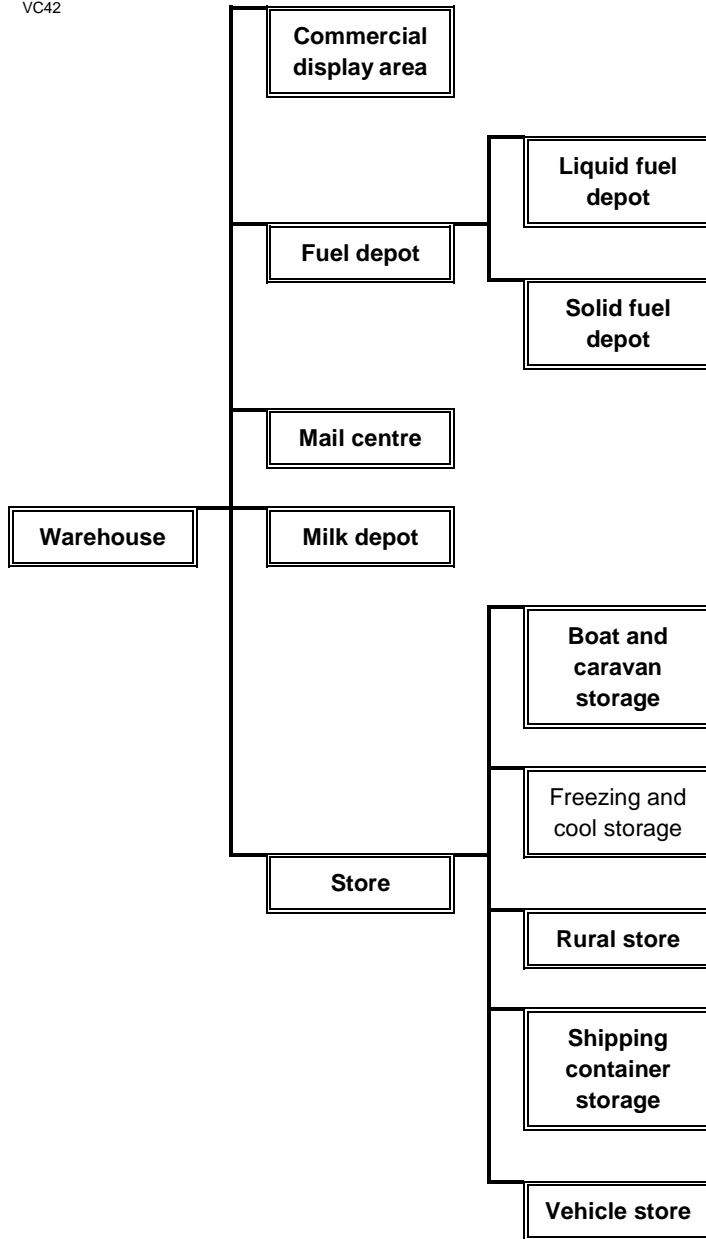
09/10/2006  
VC42

**UTILITY INSTALLATION GROUP**



75.15  
09/10/2006  
VC42

### WAREHOUSE GROUP



**75.16**

09/10/2006  
VC42

**LAND USE TERMS THAT ARE NOT NESTED**

**Art and craft centre**

**Brothel**

**Car park**

**Cemetery**

**Cinema based entertainment facility**

**Crematorium**

**Display home**

**Emergency services facility**

**Freeway service centre**

**Funeral parlour**

**Home occupation**

**Hospital**

**Natural systems**

**Research centre**

**Saleyard**

**Service station**

**Tramway**

**Veterinary centre**

**Wind energy facility**

**Winery**