

22.02-1
19/01/2006
VC37

FALLS CREEK LOCAL PLANNING POLICY – ABORIGINAL HERITAGE

This policy applies to the Falls Creek Alpine Resort.

Policy Basis

Places, sites and objects demonstrating former Aboriginal occupation of the land can be found at Falls Creek. These places, sites and objects have cultural, educational and archaeological significance for the local Aboriginal community and for the broader community. Development activities at Falls Creek have the potential to impact on Aboriginal places, sites and objects.

Most Aboriginal archaeological materials at Falls Creek are in the form of stone artefacts on the ground surface or in the top few centimetres of the shallow topsoils. Any materials which might be present in a development area will inevitably be disturbed or destroyed by any development activities (such as the construction of new buildings or roads) which disturb or remove the topsoil.

This policy:

- Applies Clause 15.11 of the State Planning Policy Framework to the Falls Creek Alpine Resort.
- Builds on Clause 21.02-4 of the Strategic Statement relating to environment and infrastructure in the Resort.
- Applies the principles of the “Falls Creek Alpine Resort Aboriginal Heritage Management Study” August 2000 relating to archaeological investigation, assessment and management.

Policy Objectives

The objectives of this policy are to:

- Identify and record sites and objects of Aboriginal heritage significance.
- Conserve sites and objects of Aboriginal heritage significance.
- Determine and implement appropriate management strategies for sites and objects in consultation with the local Aboriginal community.

Policies

Proposals are classified into the following categories:

CATEGORY	DESCRIPTION OF WORKS
Minor works	Sign posting Fencing Laying of cables and other underground services Extensions to existing buildings that are less than 500sqm in area Paths, access tracks or drives which are less than 10m wide and/or less than 500sqm in area Redevelopment of an existing building footprint
Medium works	Those involving the disturbance of an area of between 500sqm and 2000sqm. These works include new buildings and roads which cause

CATEGORY	DESCRIPTION OF WORKS
	extensive disturbance of the ground surface.
Major works	Those involving the disturbance of an area greater than 2000sqm. These works include new buildings and roads which cause extensive disturbance of the ground surface.

The Archaeological Potential Map (Figure 1 to this schedule) will determine whether an archaeological investigation and assessment is required in accordance with the requirements of the Falls Creek Aboriginal Heritage Management Study (AHMS) as set out in the following table:

CATEGORY	AREA 1	AREA 2A	AREA 3
Minor works	not required	not required	not required
Medium works	required	not required	not required
Major works	required	required	not required

If an archaeological investigation and assessment is required, it is policy to:

- Remove the maximum extent of shrub/heath vegetation (which obscures the ground surface and any artefacts) practicable whilst minimising ground disturbance.

In the event that any archaeological material is uncovered during development works, it is policy to:

- Assess its significance and make recommendations for its management.
- Record the location and fence of the area to protect it from ongoing construction works.
- Contact Aboriginal Affairs Victoria (AAV) and the relevant Aboriginal organisations and arrange for the site/material to be inspected and assessed by a qualified archaeologist, working with representatives of the appropriate Aboriginal organisations.

If any skeletal remains are uncovered during construction works, it is policy to:

- Cease excavation and associated work.
- Notify the Police, the Coroner's Office and AAV immediately.
- Follow the advice set out in the guidelines for reporting on finding human remains, which are attached as Appendix 2 to the Falls Creek Alpine Resort AHMS.

Where the development is in areas containing known locations with archaeological materials (of which there are four at the present time), it is policy to:

- Implement the specific management recommendations prepared for that archaeological place or site.
- Make application to the relevant local Aboriginal community under the Aboriginal and Torres Strait Islander Heritage Protection Act 1984 (in this case the Bangerang Cultural Centre Cooperative Ltd).

Policy References

Report on the 2000 Falls Creek Alpine Resort Aboriginal Heritage Management Study, especially the Archaeological Potential Map.

Archaeological and Aboriginal Relics Preservation Act 1972

Aboriginal and Torres Strait Islander Heritage Protection Act 1984

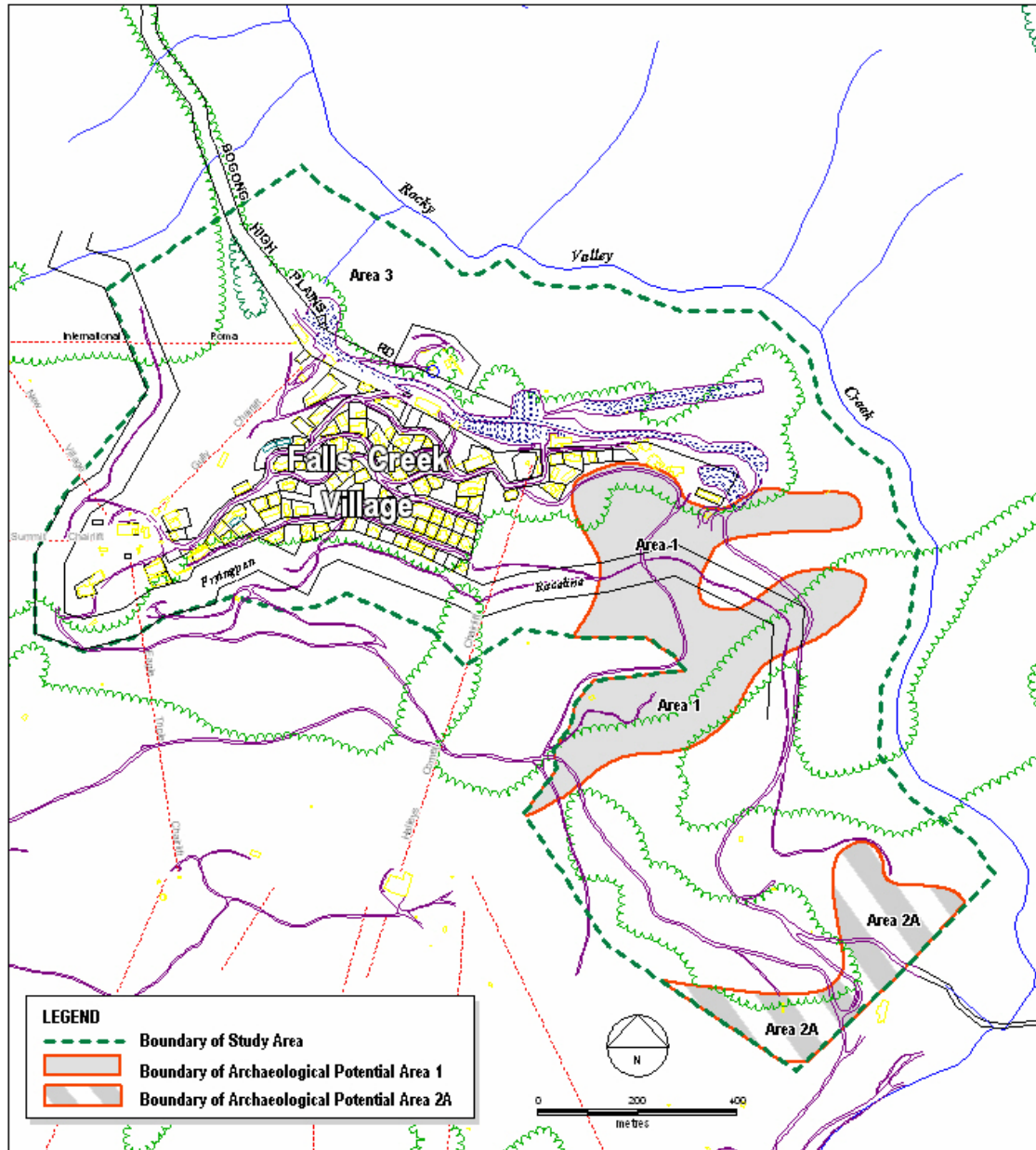


Figure 1: Archaeological Potential Map

(Based on Figure 3: Archaeological Potential Map – Falls Creek Alpine Resort Aboriginal Heritage Management Study, Huonbrook Environment & Heritage P/L, August 2000).