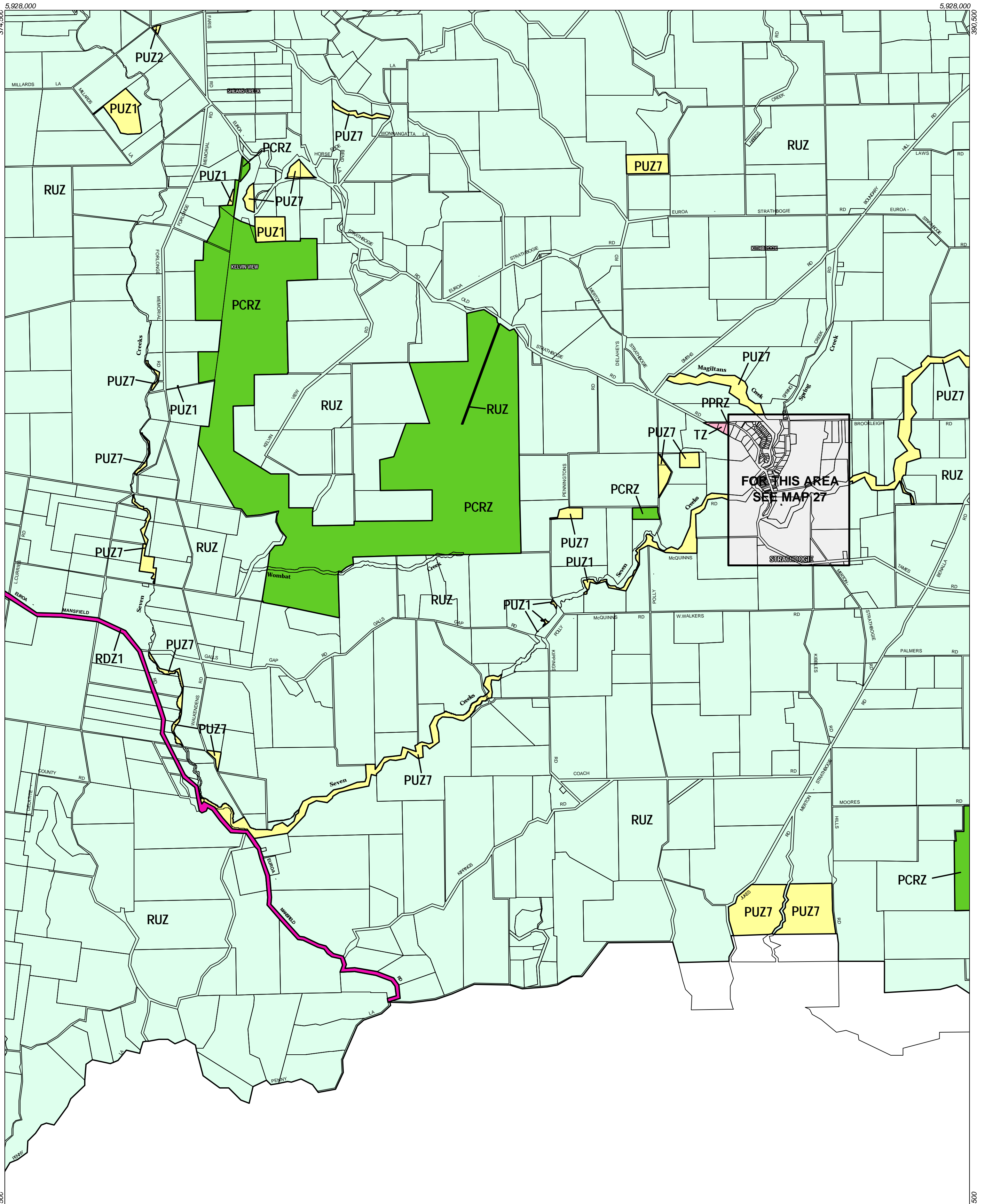


STRATHBOGIE PLANNING SCHEME - LOCAL PROVISION

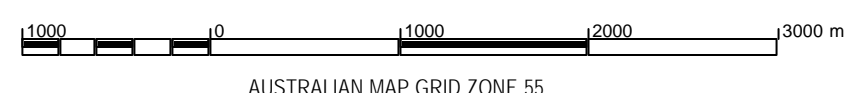


5,908,000 This publication is copyright. No part may be reproduced by any process except in accordance with the provisions of the Copyright Act 1968 of the State of Victoria.

This map should be read in conjunction with additional Planning Overlay Maps (if applicable) as indicated on the INDEX TO MAPS.

5,908,000

Public Land	
	Public Conservation And Resource Zone
	Public Park And Recreation Zone
	Public Use Zone Education
	Public Use Zone Other Public Use
	Public Use Zone Service And Utility
	Road Zone Category 1
Residential	
	Township Zone
Rural	
	Rural Zone



AUSTRALIAN MAP GRID ZONE 55

THIS MAP INCORPORATES APPROVED ZONES AS AT: 07-10-1999
Printed: 19/6/2003

